



---

# ***ETANJ***

Performance for tough conditions...



# Etanj

Luminaire Series



LINA ETANJ V.4	4
LINA ETANJ MINI V.2	5
LINA LENS V.2	8
COZAR	9
VLX ETANJ V.2	10
GALIS	11
GALIS MINI	12
TORIA	13

# LINA ETANJ V.4

## INDUSTRIAL LIGHTING LED LUMINAIRE



The LiNa V. 4 offers an optimized lighting solution in high-end LED infrastructure and high-IP-protected bodywork and in environments with moisture and dust. In difficult to reach neighborhoods such as parking, storage, general industrial areas, it provides long life, maximum energy savings, ease of installation and handling. The luminaire exchange is quick and easy with a flexible mounting spring that can move on the body.



### Technical Features

Body	: Aluminum extrusion body
Diffuser	: Opal diffuser with camouflage control
Light Source	: Mid Power LED
Consumption Power:	10 W, 19 W, 20 W, 22 W, 27 W, 36 W, 54 W, 62 W
Lumen	: 1000lm, 2000lm, 3000lm, 4000lm, 5000lm, 7000lm, 8000lm
Input Voltage	: 220-240V AC 50/60 Hz
Colour Temperature	: 3000K / 4000K / 5700K
CRI	: > 80
IP	: IP65
Usage is	: Pendant, Surface mounted
Body Color	: Elokсал

### Order Table

#### Etanj v4

Order Code	Product Code	Product Explanation	Power (W)	Weight (kg)
3203695	LNE 010U 400D00 1K0 030 ST V.4	10 W 4000K	9,9	0,8
3203719	LNE 019U 400D00 2K0 053 ST V.4	19 W 4000K	18,7	1,1
3203797	LNE 022U 400D00 3K0 085 ST V.4	22 W 4000K	21,7	1,6
3203800	LNE 020U 400D00 2K7 125 ST V.4	20 W 4000K	20	2,2
3203992	LNE 027U 400D00 3K8 085 ST V.4	27 W 4000K	27,3	2,2
3203997	LNE 027U 400D00 3K8 125 ST V.4	27 W 4000K	27,6	2,2
3203987	LNE 027U 400D00 3K8 149 ST V.4	27 W 4000K	27,2	1,6
3204239	LNE 036U 400D00 4K8 085 ST V.4	36 W 4000K	35,9	2,2
3204244	LNE 036U 400D00 4K8 125 ST V.4	36 W 4000K	35,6	2,3
3204249	LNE 036U 400D00 4K8 149 ST V.4	36 W 4000K	36	2,8
3204461	LNE 054U 400D00 7K3 149 ST V.4	54 W 4000K	53,6	2,8
3224458	LNE 062U 400D00 8K0 125 ST V.4	62 W 4000K	63,1	2,3
3204544	LNE 062U 400D00 8K3 149 ST V.4	62 W 4000K	61,8	2,8

#### MR Rakor

Order Code	Product Code	Product Explanation	Power (W)	Weight (kg)
3203694	LNE 010U 400D00 1K0 030 MR V.4	10 W 4000K	9,9	0,8
3203718	LNE 019U 400D00 2K0 053 MR V.4	19 W 4000K	18,7	1,1
3203795	LNE 022U 400D00 3K0 085 MR V.4	22 W 4000K	21,7	1,6
3203799	LNE 020U 400D00 2K7 125 MR V.4	20 W 4000K	20	2,2
3203989	LNE 027U 400D00 3K8 085 MR V.4	27 W 4000K	27,3	1,6
3203995	LNE 027U 400D00 3K8 125 MR V.4	27 W 4000K	27,6	2,2
3203986	LNE 027U 400D00 3K8 149 MR V.4	27 W 4000K	27,2	2,7
3204237	LNE 036U 400D00 4K8 085 MR V.4	36 W 4000K	35,9	1,6
3204242	LNE 036U 400D00 4K8 125 MR V.4	36 W 4000K	35,6	2,2
3204248	LNE 036U 400D00 4K8 149 MR V.4	36 W 4000K	36	2,7
3204458	LNE 054U 400D00 7K3 149 MR V.4	54 W 4000K	53,6	2,7
3204537	LNE 062U 400D00 8K0 125 MR V.4	62 W 4000K	63,1	2,2
3204542	LNE 062U 400D00 8K3 149 MR V.4	62 W 4000K	61,8	2,7

### Technical Drawing

#### Etanj V.4



#### MR Rakor



### Dimensions (mm)

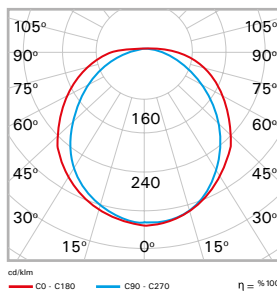
#### Etanj V.4

Type	a	b	h	d
10 W	373	65	83	70
19 W	600	65	83	70
23 W / 31 W / 38 W	920	65	83	70
23 W / 31 W / 38 W	1320	65	83	70
54 W / 62 W	1560	65	83	70

#### MR Rakor

Type	a	b	h	d
10 W	318	65	83	15
19 W	545	65	83	15
23 W / 31 W / 38 W	865	65	83	15
23 W / 31 W / 38 W	1265	65	83	15
56 W / 72 W	1505	65	83	15

### Fotometrik Veri



### Options

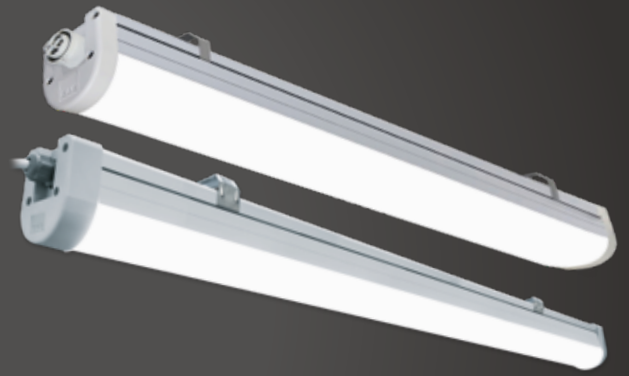
Emergency Kit	: Yes (1-3 Hour)
DALI	: Yes
Sensor Compatibility:	Yes



# LINA ETANJ Mini

## V.2

INDUSTRIAL LIGHTING LED LUMINAIRE



THE LINA ETANJ MINI V. 2 is ideal for parking, storage, humid volumes, machine tracks and production lines where the need for a balanced combination of performance and economy with a high IP protected bodyguard reduced to minimal dimensions. Thanks to its advanced design, it offers easy installation and maintenance without the need for tools.

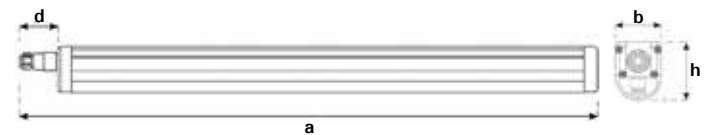


### Technical Features

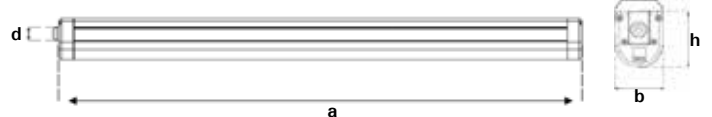
Body	: Aluminum extrusion body
Diffuser	: Opal diffuser with camouflage control
Light Source	: Mid Power LED
Consumption Power	: 10 W / 16 W / 20 W / 30 W / 38 W
Lumen	: 1038 lm / 1449 lm / 1476 lm / 1731 lm / 2432 lm 2646 lm / 3200 lm / 32900 lm / 3380 lm/ 4393 lm / 4448 lm
Input Voltage	: 220-240V AC 50/60Hz
Colour Temperature	: 3000K / 5700K / 6500K
CRI	: > 80
IP	: IP64
Usage is	: Surface mounted
Body Color	: Eloksal

### Technical Drawing

Etanj V.SE



PG Rakor



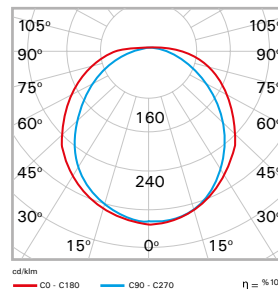
### Dimensions (mm)

Type	a	b	h	d
10 W / 14W / 16W	543	47	70	15
12 W / 20W / 30W	1023	47	70	15
12 W / 20W	1030	47	70	15
14 W / 20W / 30W / 38W	1263	47	70	15
30W / 38W	1503	47	70	15

### Order Table

Order Code	Product Code	Product Explanation	Power (W)	Weight (kg)
3204730	LNE 010U 400D00 1K0 053MR MN V.2	10 W 4000K	9,8	0,8
3204964	LNE 010U 400D00 1K4 100 MR MN V.2	10 W 4000K	12,2	1,1
3204915	LNE 016U 400D00 1K4 053 MR MN V.2	16 W 4000K	14,4	1,6
3204758	LNE 016U 400D00 1K7 125 MR MN V.2	16 W 4000K	14,4	2,2
3204734	LNE 020U 400D00 2K4 100 MR MN V.2	20 W 4000K	21,2	2,2
3204782	LNE 020U 400D00 2K6 125 MR MN V.2	20 W 4000K	21,3	2,2
3204830	LNE 030U 400D00 3K2 100 MR MN V.2	30 W 4000K	29	1,6
3204919	LNE 030U 400D00 3K3 125 MR MN V.2	30 W 4000K	29,2	2,2
3204806	LNE 030U 400D00 3K3 149 MR MN V.2	30 W 4000K	29,2	2,7
3204921	LNE 038U 400D00 4K4 125 MR MN V.2	38 W 4000K	38,5	2,7
3204833	LNE 038U 400D00 4K4 149 MR MN V.2	38 W 4000K	37,5	2,7

### Photometric Curve



### Options

Emergency Kit	: Yes (1-3 Hour)
DALI	: Yes
Sensor Compatibility:	Yes

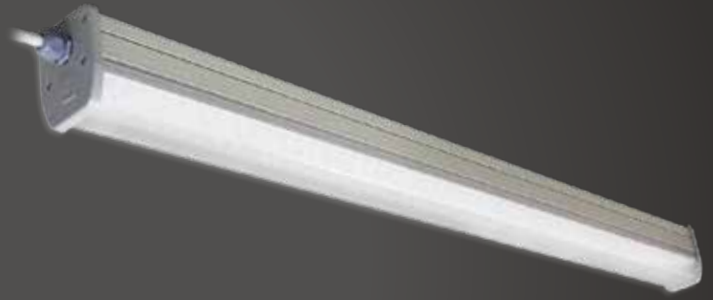






# LINA LENS V.2

## ARENA (60°) - LOWBAY (90°)



INDUSTRIAL LIGHTING LED LUMINAIRE



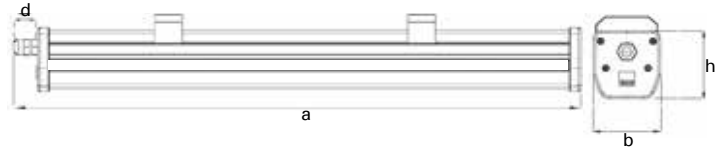
THE LINA LENS V. 2 is designed for a wide range of applications, such as strong bodyguards and parking lots (typically low ceilings) or antrepolar (high ceilings), and includes an optimal solution for energy saving. Thanks to the smart end caps, the luminaire mounting is easy, providing different electrical connections via wiring or connection.



### Technical Features\*

Body	: Aluminum extrusion body
Optic	: 60° ve 90° Multi Lens
Diffuser	: Diffuser with camouflage control
Light Source	: Mid Power LED
ConsumptionPower	
Arena (60°)	: 34 W / 54 W
Lowbay (90°)	: 34 W / 54 W
Lumen	
Arena (60°)	: 4800 lm / 7662 lm
Lowbay (90°)	: 4673 lm / 7083 lm
Input Voltage	: 220-240V AC 50/60Hz
Colour Temperature	: 3000K / 6500K
CRI	: > 80
IP	: IP64
Usage is	: Surface mounted
Body Color	: Eloksal

### Technical Drawing



### Dimensions (mm)

Arena				
Type	a	b	h	d
34 W	1197	86	92	30
54 W	1484	86	92	30

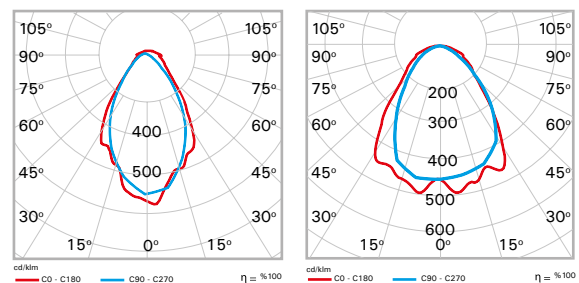
Lowbay				
Type	a	b	h	d
34 W	1197	86	92	30
54 W	1484	86	92	30

\* Technical values have a tolerance of  $\pm 5\%$ .

### Order Table

Order Code	Product Code	Product Explanation	Power (W)	Weight (kg)
Arena				
3116651	LNE 034U 400D00 4K7 110PG 60 V.2	4000K	34	3,3
3116687	LNE 054U 400D00 7K6 145PG 60 V.2	4000K	54	3,3
Lowbay				
3116669	LNE 034U 400D00 4K6 110PG 90 V.2	4000K	34	3,3
3116705	LNE 054U 400D00 7K0 145PG 90 V.2	4000K	54	3,3

### Photometric Curve



ARENA

LOWBAY

### Options

Emergency Kit	: Yes (1-3 Hour)
DALI	: Yes





## INDUSTRIAL LIGHTING LED LUMINAIRE

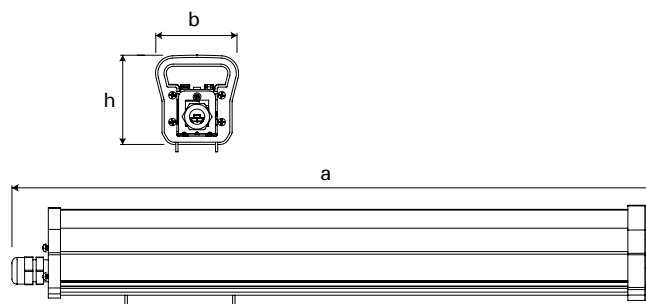
A built-in body structure, all PC material, produced with a special manufacturing technique, provides a minimal image. The body cover construction without bonding details ensures a high twine protection class. The different Lumen package is the optimal and economical lighting solution for areas requiring ethanasia lighting, which offers a choice of sizes.



### Technical Features

Body	: PC Body
Optic	: Opal Diffuser
Light Source	: Mid Power LED
Consumption Power	: 19 W / 23 W / 29 W / 40 W / 55 W / 71 W
Lumen	: 2000 lm / 3000 lm / 4000 lm / 6000 lm / 8000 lm
Input Voltage	: 220-240 V 50-60 Hz
Colour Temperature	: 3000K / 4000K / 5700K / 6500K
CRI	: > 80
IP	: IP65
Usage is	: Surface mounted /pendant

### Technical Drawing



### Dimensions (mm)

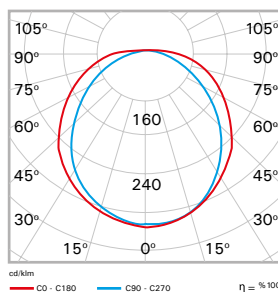
PG Rakor

Type	a	b	h
19 W	530	70	75
23 W / 29 W / 40 W	825	70	75
23 W / 29 W / 40 W	1226	70	75
29 W / 40 W / 71 W	1492	70	75

### Order Table

Order Code	Product Code	Product Explanation	Power (W)	Weight (kg)
3135028	COZ 019U 400D00 1K9 053 MR	4000K	19	1,2
3135044	COZ 023U 400D00 2K6 085 MR	4000K	23	1,7
3135116	COZ 023U 400D00 2K6 125 MR	4000K	23	2,1
3135188	COZ 029U 400D00 3K4 085 MR	4000K	29	1,7
3135260	COZ 029U 400D00 3K4 125 MR	4000K	29	1,7
3135332	COZ 029U 400D00 3K5 149 MR	4000K	29	1,7
3135404	COZ 040U 400D00 4K4 085 MR	4000K	40	1,7
3135476	COZ 040U 400D00 4K3 125 MR	4000K	40	2,1
3135548	COZ 040U 400D00 4K6 149 MR	4000K	40	2,1
3159785	COZ 055U 400D00 6K1 146 MR	4000K	55	2,4
3135620	COZ 075U 400D00 8K1 149 MR	4000K	71	2,5

### Photometric Curve



### Options

Emergency Kit	: Yes (1-3 Hour)
DALI	: Yes
Sensor Compatibility:	Yes

# VLX ETANJ V.2

INDUSTRIAL LIGHTING LED LUMINAIRE



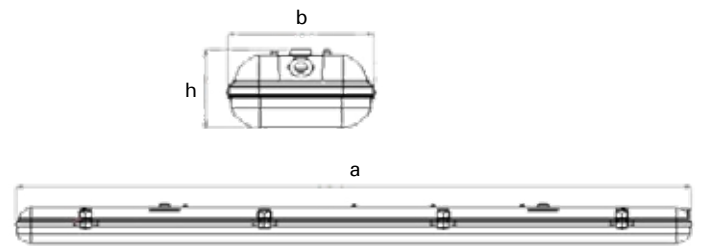
The VLX ETANJ V. 2 is ideal for projects requiring a balanced combination of traditional product body structure and economy and energy efficiency. The different Lumen package includes a choice of height, PC or metal cover locking clips.



## Technical Features

Body	: Polikarbon body, Metal Clamp clip
Diffuser	: Polycarbonate opal cap
Light Source	: Mid Power LED
Consumption Power	: 28 W / 38 W / 55 W / 60W / 74 W
Lumen	: 3462 lm / 4355 lm / 6525 lm / 7174 lm / 8443 lm
Input Voltage	: 220-240 V AC 50/60 Hz
Colour Temperature	: 4000K / 6500K
CRI	: > 80
IP	: IP65
Usage is	: Surface mounted

## Technical Drawing



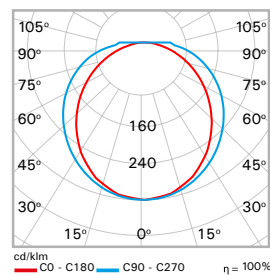
## Dimensions (mm)

Type	a	b	h
28 W / 38 W	1275	134	99
55 W / 60 W / 74W	1575	134	99

## Order Table

Order Code	Product Code	Product Explanation	Power (W)	Weight (kg)
3136493	VLX 028U 400D00 3K4120 V.2	4000K	28	2,4
3136494	VLX 038U 400D00 4K3120 V.2	4000K	38	2,6
3137340	VLX 055U 400D00 6K5150 V.2	4000K	55	3
3164302	VLX 060U 400D00 7K1150 V.2	4000K	60	3
3164301	VLX 073U 400D00 8K4150 V.2	4000K	73	3

## Photometric Curve



## Options

Emergency Kit	: Yes (1-3 Hour)
DALI	: Yes





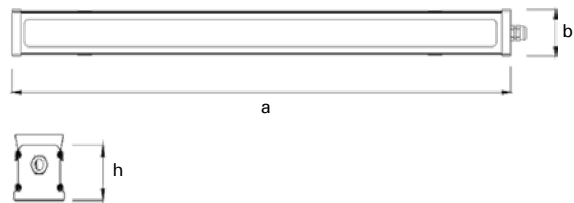
GALIS is ideal for use in parking, storage, wet and humid volumes with a high IP-protected bodyguard. Sandy and The front surface with transparent glass Options is tempered against breaking and cracking. Through wiring can be wired with a serial pass.



### Technical Features

Body	: Aluminum extrusion body
Diffuser	: Tempered clear glass / Sandy glass
Light Source	: Mid Power LED
Consumption Power	
(Transparent glass)	: 19 W / 23W / 28 W / 37 W / 55 W / 70 W
(Kumlu Cam)	: 19 W / 23 W / 28 W / 37 W / 55W / 70 W
Lumen	
(Transparent glass)	: 2432 lm / 3096 lm / 4073 lm / 5277 lm / 3197 lm / 4093 lm / 5225 lm / 4185 lm / 5360 lm / 9547 lm
(Sandy glass)	: 1980 lm / 2523 lm / 3266 lm / 4095 lm / 2595 lm / 3340 lm / 4250 lm / 3175 lm / 4097 lm / 6025 lm / 7450 lm
Input Voltage	: 220-240V AC 50/60Hz
Colour Temperature	: 4000K
CRI	: > 80
IP	: IP66
Usage is	: Surface mounted
Body Color	: Eloksal

### Technical Drawing



### Dimensions (mm)

#### Transparent glass

Type	a	b	h	d
19 W	526	76	70,5	15
23 W / 28 W / 37 W	845	76	70,5	15
23 W / 28 W / 37 W	1246	76	70,5	15
28 W / 55W / 70W	1489	76	70,5	15

#### Sandy glass

Type	a	b	h	d
19 W	526	76	70,5	15
23 W / 28W / 37W	845	76	70,5	15
23 W / 28W / 37W	1246	76	70,5	15
55W / 70 W	1489	76	70,5	15

### Order Table

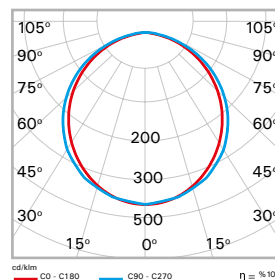
#### Models with clear glass

Order Code	Product Code	Product Explanation	Power (W)	Weight (kg)
3208308	GLS 019U 40CM00 2K4 053 MR	4000K	19	1,75
3208311	GLS 023U 40CM00 3K0 085 MR	4000K	23	2,7
3208347	GLS 028U 40CM00 4K1 085 MR	4000K	28	2,7
3208401	GLS 037U 40CM00 5K3 085 MR	4000K	37	2,7
3208329	GLS 023U 40CM00 3K2 125 MR	4000K	23	3,4
3208365	GLS 028U 40CM00 4K1 125 MR	4000K	28	3,4
3208419	GLS 037U 40CM00 5K2 125 MR	4000K	37	3,4
3208383	GLS 028U 40CM00 4K2 149 MR	4000K	28	4,3
3208437	GLS 037U 40CM00 5K4 149 MR	4000K	37	4,3
3208647	GLS 055U 40CM00 7K6 149 MR	4000K	55	4,3
3208455	GLS 070U 40CM00 9K5 149 MR	4000K	70	4,3

#### Sandy Glass Models

Order Code	Product Code	Product Explanation	Power (W)	Weight (kg)
3208479	GLS 019U 40KC00 2K4 053 MR	4000K	19	1,75
3208482	GLS 023U 40KC00 2K0 085 MR	4000K	23	2,7
3208518	GLS 028U 40KC00 3K3 085 MR	4000K	28	2,7
3248555	GLS 037U 40KC00 4K0 085 MR	4000K	37	2,7
3208500	GLS 023U 40KC00 2K6 125 MR	4000K	23	3,4
3208536	GLS 028U 40KC00 3K3 125 MR	4000K	28	3,4
3208590	GLS 037U 40KC00 4K2 125 MR	4000K	37	3,4
3208554	GLS 028U 40KC00 3K2 149 MR	4000K	28	4,3
3208608	GLS 037U 40KC00 4K1 149 MR	4000K	37	4,3
3208921	GLS 055U 40KC00 6K0 149 MR	4000K	55	4,3
3208626	GLS 070U 40KC00 7K5 149 MR	4000K	70	4,3

### Photometric Curve



### Options

Emergency Kit	: Yes (1-3 Hour)
DALI	: Yes

# GALIS mini

## INDUSTRIAL LIGHTING LED LUMINAIRE

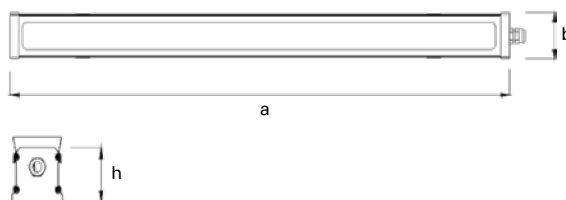
The GALIS Mini needs a balanced combination of economy and functionality with a compact body with high IP protection it is the optimal solution for projects heard. Through wiring can be wired with a serial pass. The front surface is tempered against breaking and cracking.



### Technical Features

Body	: Aluminum extrusion body
Diffuser	: Tempered clear glass / Tempered sand glass
Light Source	: Mid Power LED
Consumption Power	
(Transparent glass)	: 10 W / 14 W / 20 W / 29 W / 36 W
(Sandy glass)	: 10 W / 14 W / 20 W / 29 W / 36 W
Lumen	
(Transparent glass)	: 1128 lm / 2503 lm / 3318 lm
(Sandy glass)	: 867 lm / 1939 lm 2673 lm / 3155 lm
Input Voltage	: 220-240V AC 50/60Hz
Colour Temperature	: 3000K / 4000K / 6500K
CRI	: > 80
IP	: IP66
Usage is	: Surface mounted
Body Color	: Eloksal

### Technical Drawing



### Dimensions (mm)

#### Transparent glass

Type	a	b	h	d
10 W	530	62	62	15
20 W / 29 W	1010	62	62	15
14 W / 36 W	1246	62	62	15
29 W / 36 W	1490	62	62	15

#### Sandy glass

Type	a	b	h	d
10 W	530	62	62	15
20 W / 29 W	1010	62	62	15
14 W / 36 W	1246	62	62	15
29 W / 36 W	1490	62	62	15

### Order Table

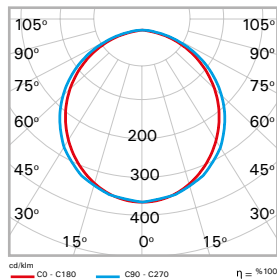
#### Models with clear glass

Order Code	Product Code	Product Explanation	Power (W)	Weight (kg)
3208656	GLS 010U 40CM00 1K2 053 MR V.B MN	4000K	10	1,3
3208687	GLS 020U 40CM00 2K7 100 MR V.B MN	4000K	20	2,5
3208740	GLS 029U 40CM00 3K7 100 MR V.B MN	4000K	29	2,5
3208668	GLS 014U 40CM00 2K0 125 MR V.B MN	4000K	14	3,4
3208711	GLS 020U 40CM00 2K9 125 MR V.B MN	4000K	20	3,4
3208928	GLS 029U 40CM00 3K7 125 MR V.B MN	4000K	29	3,4
3208783	GLS 036U 40CM00 4K2 125 MR V.B MN	4000K	36	3,4
3208759	GLS 029U 40CM00 3K8 149 MR V.B MN	4000K	29	3,4
3208812	GLS 036U 40CM00 5K0 149 MR V.B MN	4000K	36	3,4

#### Sandy glass versions

Order Code	Product Code	Product Explanation	Power (W)	Weight (kg)
3208958	GLS 010U 40KC00 0K9 053 MR V.B MN	4000K	10	1,3
3208954	GLS 020U 40KC00 2K1 100 MR V.B MN	4000K	20	2,5
3208952	GLS 029U 40KC00 2K9 100 MR V.B MN	4000K	29	2,5
3208956	GLS 014U 40KC00 1K6 125 MR V.B MN	4000K	14	3,4
3208953	GLS 020U 40KC00 2K0 125 MR V.B MN	4000K	20	3,4
3234278	GLS 029U 40KC00 3K0 125 MR V.B MN	4000K	29	3,4
3208955	GLS 036U 40KC00 3K7 125 MR V.B MN	4000K	36	3,4
3208959	GLS 029U 40KC00 2K8 149 MR V.B MN	4000K	29	3,4
3208957	GLS 036U 40KC00 3K9 149 MR V.B MN	4000K	36	3,4

### Photometric Curve



### Options

Emergency Kit	: Yes (1-3 Hour)
DALI	: Yes



# TORIA

## INDUSTRIAL LIGHTING LED LUMINAIRE



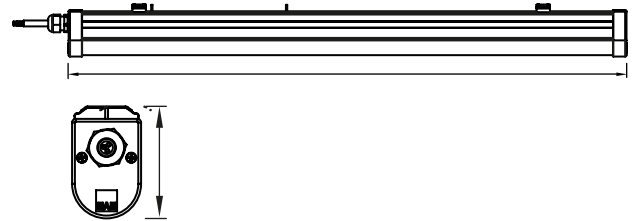
*Toria is ideal for the general lighting needs of any location that does not require IP protection, with a minimized bodybuilder and homogeneous light emitted from the opal Diffuser, offering a variety of sizes and Lumens. It offers an optimal solution with long life and high energy savings in environments that are difficult to reach and maintain. The flexible mounting spring, which does not require additional drilling in the roof, provides an advantage for 1:1 replacement jobs.*



### Technical Features

Body	: Aluminum extrusion body
Diffuser	: Opal diffuser
Light Source	: Mid Power LED
Consumption Power	: 15 W / 25 W
Lumen	: 1587lm / 1713 lm / 2700 lm
Input Voltage	: 220-240V AC 50/60Hz
Colour Temperature	: 3000K / 4000K / 5700K / 6500K
CRI	: > 80
IP	: IP20
Usage is	: Surface mounted
Body Color	: Grey

### Technical Drawing



### Dimensions (mm)

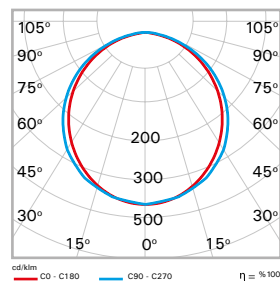
Transparent glass				
Type	a	b	h	d
15 W	825	49	80	15
15 W	1225	49	80	15
25 W	1465	49	80	15

### Order Table

Models with clear glass

Order Code	Product Code	Product Explanation	Power (W)	Weight (kg)
3177892	TRA 015U 400D00 1K5 085 20	4000K	15	1
3177893	TRA 015U 400D00 1K7 125 20	4000K	15	1,3
3177894	TRA 024U 400D00 2K7 149 20	4000K	24	1,5

### Photometric Curve



### Options

Emergency Kit	: Yes (1-3 Hour)
DALI	: Yes

# GALIS mini

## INDUSTRIAL LIGHTING LED LUMINAIRE

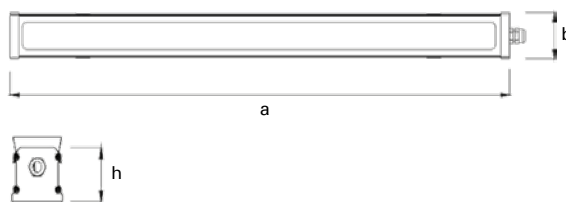
The GALIS Mini needs a balanced combination of economy and functionality with a compact body with high IP protection it is the optimal solution for projects heard. Through wiring can be wired with a serial pass. The front surface is tempered against breaking and cracking.



### Technical Features

Body	: Aluminum extrusion body
Diffuser	: Tempered clear glass / Tempered sand glass
Light Source	: Mid Power LED
Consumption Power	
(Transparent glass)	: 10 W / 14 W / 20 W / 29 W / 36 W
(Sandy glass)	: 10 W / 14 W / 20 W / 29 W / 36 W
Lumen	
(Transparent glass)	: 1128 lm / 2503 lm / 3318 lm
(Sandy glass)	: 867 lm / 1939 lm 2673 lm / 3155 lm
Input Voltage	: 220-240V AC 50/60Hz
Colour Temperature	: 3000K / 4000K / 6500K
CRI	: > 80
IP	: IP66
Usage is	: Surface mounted
Body Color	: Eloksal

### Technical Drawing



### Dimensions (mm)

#### Transparent glass

Tip	a	b	h	d
10 W	530	62	62	15
20 W / 29 W	1010	62	62	15
14 W / 36 W	1246	62	62	15
29 W / 36 W	1490	62	62	15

#### Sandy glass

Tip	a	b	h	d
10 W	530	62	62	15
20 W / 29 W	1010	62	62	15
14 W / 36 W	1246	62	62	15
29 W / 36 W	1490	62	62	15

### Order Table

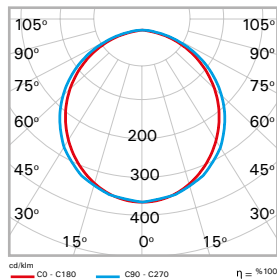
#### Models with clear glass

Order Code	Product Code	Product Explanation	Power (W)	Weight (kg)
3208656	GLS 010U 40CM00 1K2 053 MR V.B MN	4000K	10	1,3
3208687	GLS 020U 40CM00 2K7 100 MR V.B MN	4000K	20	2,5
3208740	GLS 029U 40CM00 3K7 100 MR V.B MN	4000K	29	2,5
3208668	GLS 014U 40CM00 2K0 125 MR V.B MN	4000K	14	3,4
3208711	GLS 020U 40CM00 2K9 125 MR V.B MN	4000K	20	3,4
3208928	GLS 029U 40CM00 3K7 125 MR V.B MN	4000K	29	3,4
3208783	GLS 036U 40CM00 4K2 125 MR V.B MN	4000K	36	3,4
3208759	GLS 029U 40CM00 3K8 149 MR V.B MN	4000K	29	3,4
3208812	GLS 036U 40CM00 5K0 149 MR V.B MN	4000K	36	3,4

#### Sandy glass versions

Order Code	Product Code	Product Explanation	Power (W)	Weight (kg)
3208958	GLS 010U 40KC00 0K9 053 MR V.B MN	4000K	10	1,3
3208954	GLS 020U 40KC00 2K1 100 MR V.B MN	4000K	20	2,5
3208952	GLS 029U 40KC00 2K9 100 MR V.B MN	4000K	29	2,5
3208956	GLS 014U 40KC00 1K6 125 MR V.B MN	4000K	14	3,4
3208953	GLS 020U 40KC00 2K0 125 MR V.B MN	4000K	20	3,4
3234278	GLS 029U 40KC00 3K0 125 MR V.B MN	4000K	29	3,4
3208955	GLS 036U 40KC00 3K7 125 MR V.B MN	4000K	36	3,4
3208959	GLS 029U 40KC00 2K8 149 MR V.B MN	4000K	29	3,4
3208957	GLS 036U 40KC00 3K9 149 MR V.B MN	4000K	36	3,4

### Fotometrik Veri



### Options

Emergency Kit	: Yes (1-3 Hour)
DALI	: Yes



# TORIA

## INDUSTRIAL LIGHTING LED LUMINAIRE



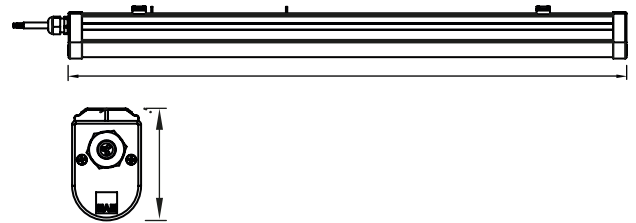
*Toria is ideal for the general lighting needs of any location that does not require IP protection, with a minimized bodybuilder and homogeneous light emitted from the opal Diffuser, offering a variety of sizes and Lumens. It offers an optimal solution with long life and high energy savings in environments that are difficult to reach and maintain. The flexible mounting spring, which does not require additional drilling in the roof, provides an advantage for 1:1 replacement jobs.*



### Technical Features

Body	: Aluminum extrusion body
Diffuser	: Opal diffuser
Light Source	: Mid Power LED
Consumption Power	: 15 W / 25 W
Lumen	: 1587lm / 1713 lm / 2700 lm
Input Voltage	: 220-240V AC 50/60Hz
Colour Temperature	: 3000K / 4000K / 5700K / 6500K
CRI	: > 80
IP	: IP20
Usage is	: Surface mounted
Body Color	: Grey

### Technical Drawing



### Dimensions (mm)

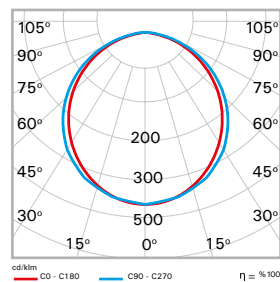
Tip	a	b	h	d
15 W	825	49	80	15
15 W	1225	49	80	15
25 W	1465	49	80	15

### Order Table

Models with clear glass

Order Code	Product Code	Product Explanation	Power (W)	Weight (kg)
3177892	TRA 015U 400D00 1K5 085 20	4000K	15	1
3177893	TRA 015U 400D00 1K7 125 20	4000K	15	1,3
3177894	TRA 024U 400D00 2K7 149 20	4000K	24	1,5

### Photometric Curve



### Options

Emergency Kit	: Yes (1-3 Hour)
DALI	: Yes



# ETANJ

## Luminaire

**IN EXTREME CONDITIONS-  
MAXIMUM PERFORMANCE...**

EAE LIGHTING-Brochure Etanj Luminaires Series - EN - Uptade Date: 28.06.2022  
EAE, is provided with the right to perform changes deemed necessary without notifying in advance.  
Please contact us for further information about products and details partaking in catalogue.



### EAE LIGHTING Inc.

Ikitelli Organize Sanayi Bolgesi  
Eski Turgut Ozal Caddesi No:20  
Basaksehir / ISTANBUL - TURKEY  
Tel : +90 212 413 21 00 (pbx)  
Fax : +90 212 549 37 90  
[www.eaelighting.com](http://www.eaelighting.com)



/eae group

/eae group

/eae group

/eae corporate

/eae group

/eae group

**engineering the light**