



Industrial Products Catalogue

Safety, Efficiency and Quality

You will find our high-performance, long-lasting lighting solutions designed for demanding industrial environments in this catalog.

Combining safety, efficiency, and quality, our products deliver strong and sustainable value to your projects.

+90 262 999 05 20

www.eaelighting.com

aydinlatma@eaegroup.com

A well-lit space is not only seen, but also experienced.

Across our entire industrial product portfolio, we deliver solutions developed on the foundations of reliability, efficiency, and quality. Engineered to perform in demanding working conditions, our products aim not only to provide illumination, but to bring a genuine lighting experience to every project.

About Us
As EAE Lighting, we continue our journey of innovation and passion, which began in 1983, with determination and vision. With over four decades of accumulated knowledge and experience, we develop high-bay lighting solutions that set industry standards, while bringing the same commitment to quality into our decorative product range through the integration of aesthetics and functionality.

At every stage of this journey, we place innovation at the core of our operations, working with a high-engineering approach in our modern manufacturing facilities. Our products, designed and developed by our R&D department, are meticulously tested in our advanced laboratories, enabling us to deliver long-lasting, efficient, and sustainable lighting solutions.



EAE Lighting in Numbers

Year of Establishment 1983	Number of Exported Countries 40	Export Rate to Europe (EU 27) %62	R&D Investment Rate %18,1	Renewable Energy Investment Rate %11	Annual Renewable Energy (SPP) Capacity 2,72 <small>GWh</small>	Renewable Energy Consumption Rate %90
Packaging Waste Recycling Rate %100	Amount of Waste Diverted from Disposal 1003 <small>TONS</small>	Rainwater Storage Capacity 556 <small>m³</small>	Occupational Health and Safety Training 5968 <small>(Person × Hours)</small>	Total Training Hours 7833 <small>(Person × Hours)</small>	Customer Satisfaction Rate %82	Number of Employees 373




Application Areas




Heavy Industry, Oil & Gas

Petrochemical,
Refinery,
Offshore,
Mining




Power Plants

Nuclear Power Plants,
Steam Power Plants,
Combined Cycle Power Plants,
Hydroelectric, Geothermal and Solar Power Plants




Railways and Tunnels

Metro Tunnels,
Road Tunnels,
Railway Tunnels,
Train Stations




Hospitals

Healthcare Facilities,
Clinics,
Laboratories



Sports Complexes

Stadiums,
Indoor Sports Complexes,
Olympic Complexes




Automotive, Iron & Steel, Glass

Automotive and Sub-Industry,
Glass Factories,
Iron & Steel Plants,
Rolling Mills



Factories & Production Facilities

Textile,
Machinery & Metal,
Plastics,
Food Production,
Pharmaceuticals




Data Centers

Automotive and Sub-Industry,
Glass Factories,
Iron & Steel Plants,
Rolling Mills



Complex Buildings and Towers

Towers and Skyscrapers,
Shopping Malls,
Office Buildings,
Hotels & Residences,
Government Buildings



Airports

Terminal Buildings,
Parking Areas,
Hangars,
Service Buildings

Contents

This catalog presents our high-performance and durable lighting solutions designed for demanding industrial conditions.

Our product families are offered with options tailored to various applications, focusing on efficiency, long service life, and installation flexibility.

01 High-Bay Lighting

- 8 Revoled-X NG Product Family
- 10 Revoled-X CR Product Family
- 12 Sround NG Product Family
- 14 Sround Industry
- 16 HBL Product Family
- 18 Garled Mega Product Family
- 20 Revero S NG
- 22 Rerero NG
- 24 Rerero SQ

02 Floodlights

- 28 Prolit Kompakt Product Family
- 30 Prolit Product Family
- 32 Prolit Plus Product Family
- 34 Prolit Effect Product Family
- 36 Valeria
- 38 Gprona Product Family
- 40 Sprona

03 Linear Lighting

- 44 Infinoo Product Family
- 46 M-Line S NG
- 48 Galis Product Family
- 50 Cozar Product Family
- 52 Tornado Product Family
- 54 YPL Product Family
- 56 YPB NG
- 58 Toria Product Family

04 Outdoor Lighting

- 62 RA Product Family
- 64 CINTIA
- 66 ALBA
- 68 Arktos Mini
- 70 Kanoled IP65

05 Emergency Lighting

- 72 Savior Mate
- 74 Galis Kit
- 78 YPL NG Kit
- 80 Garled Mega Kit

06 Lighting Automation

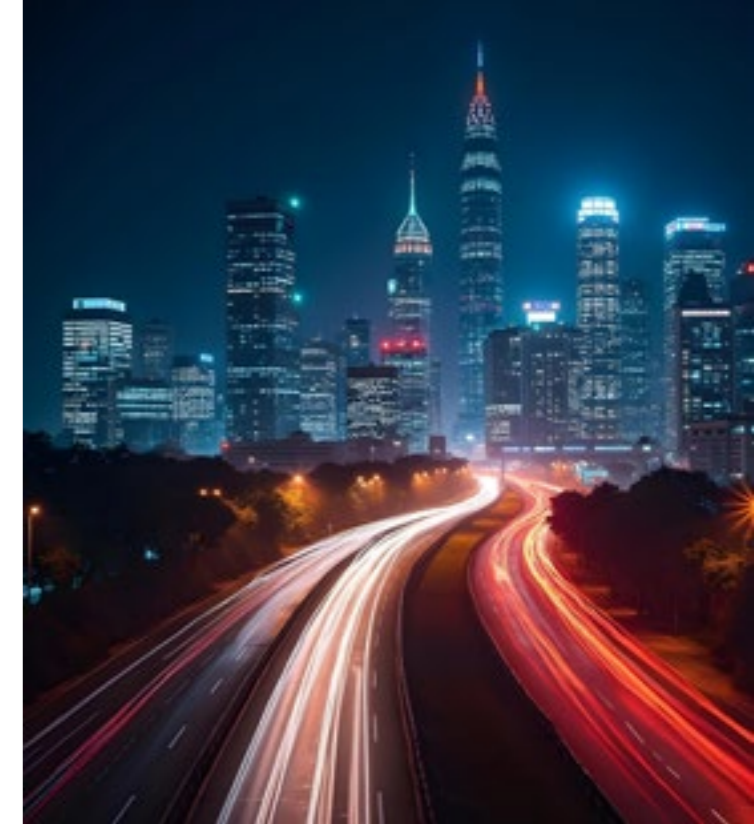
- 78 DIMKO

Certificates

- + ISO 9001: 2015
- + ISO 10002: 2018
- + ISO 14001: 2015
- + ISO 27001: 2013
- + ISO 45001: 2018
- + ISO 50001: 2018
- + ISO 14064-1:2018
- + Turkish Accreditation Agency
- + Dekra
- + Dialux Partner
- + UL Solutions (DEMKO)



View Our Certificates





High Bay Lighting

REVOLED-X NG PRODUCT FAMILY



About the Product

Revoled-X HENG, NG and NG 50x50 provide high-performance lighting for demanding industrial environments. They operate safely between -20°C and +40°C. With IP65 protection and IK07/IK08 impact resistance, they ensure long service life. Various mounting types, along with DALI and wireless RF control options, offer flexible solutions.

General Application Areas

Iron and Steel & Heavy Industry,
Aviation,
Automotive Industry,
Logistics,
Glass and Ceramics,
Machinery and Electronics,
Chemicals and Plastics,
Wood and Paper,
Sports Halls



REVOLED-X HE NG

27 W ~ 196 W
4.500 lm ~ 33.000 lm
30° / 30° - 90° / 60° / 90° / 25° - 105°



REVOLED-X NG 50x50

68 W ~ 285 W
9.568 lm ~ 40.782 lm
30° / 60° / 90°



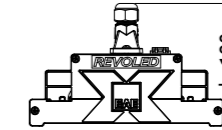
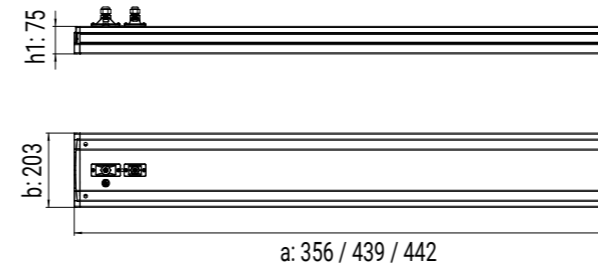
REVOLED-X NG

38 W ~ 337 W
5.660 lm ~ 42.100 lm
30° / 30° - 90° / 60° / 90° / 25° - 105°

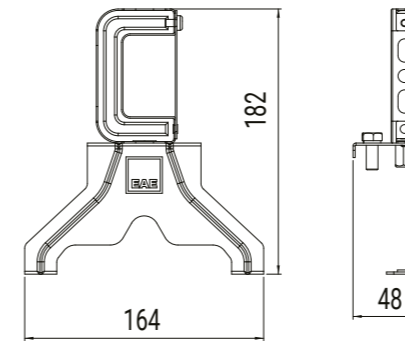
Technical Data



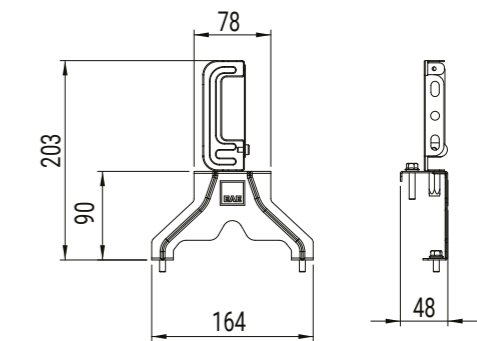
Technical Drawing



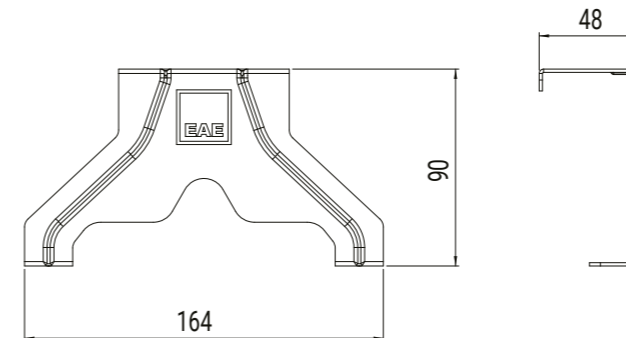
Busbar Hanger Set



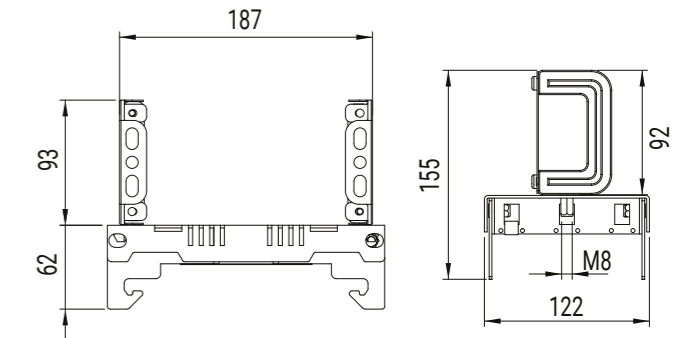
KYS Busbar Hanger Set



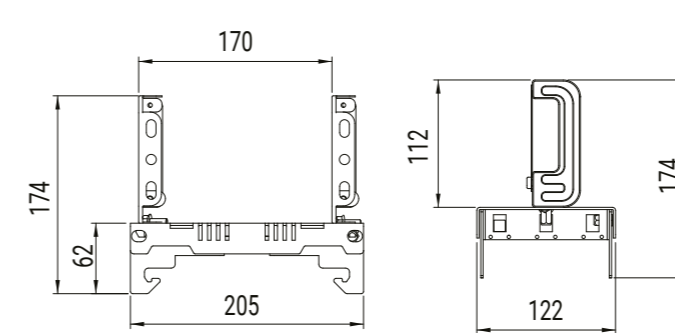
Tray Hanger Set



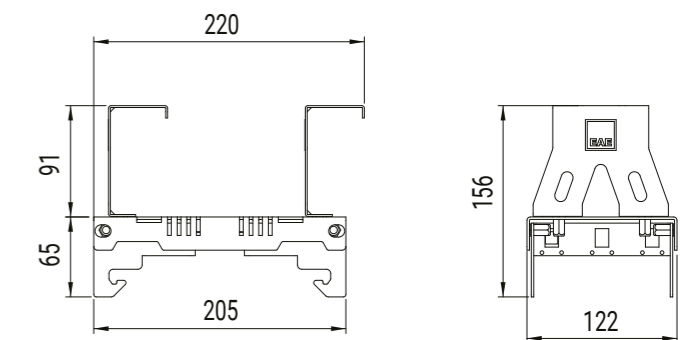
90° Busbar Hanger Set



90° KYS Busbar Hanger Set



90° Tray Hanger Set



Dimensions (mm)

	a	b	h	h1	kg
REVOLED - X HE NG	439	203	128	75	4
REVOLED - X NG 50x50	356	203	128	75	4
REVOLED - X NG	442	203	128	75	4



REVOLED-X

CR PRODUCT FAMILY



About the Product

Developed for demanding industrial conditions, these LED lighting solutions offer high reliability with IP65 protection and IK08 impact resistance. The Hot+ version operates in ambient temperatures up to 70°C, while the CR HE and CR S versions operate comfortably up to 45°C.

General Application Areas

Iron & Steel & Heavy Industry,
Aviation, Automotive Industry,
Logistics,
Glass and Ceramics,
Machinery and Electronics,
Chemicals and Plastics,
Wood and Paper,
Sports Halls



REVOLED-X CR HOT+

34 W ~ 112 W
5.800 lm ~ 19.000 lm

60° ~ 90°

REVOLED-X CR HE

60 W ~ 236 W
11.000 lm ~ 43.500 lm

60° / 90° / 25° - 105°

REVOLED-X CR S

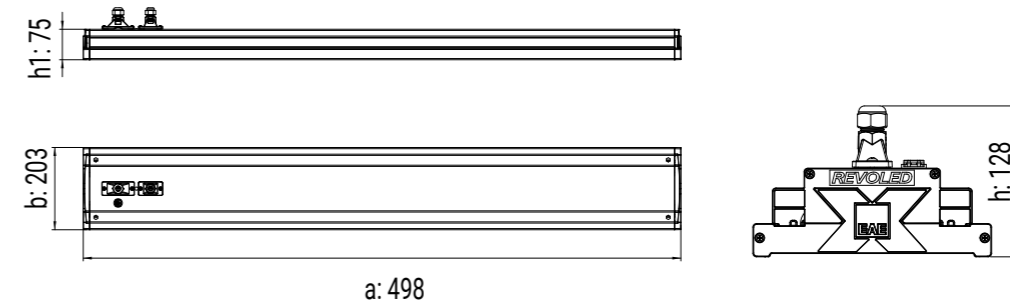
60 W ~ 249 W
10.000 lm ~ 40.000 lm

60° / 90° / 25° - 105°

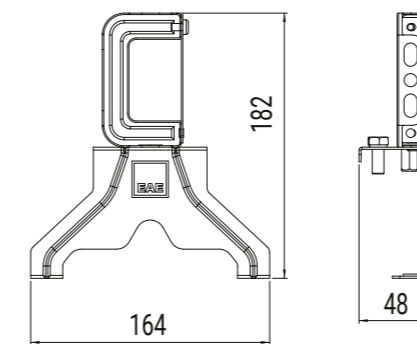
Technical Data



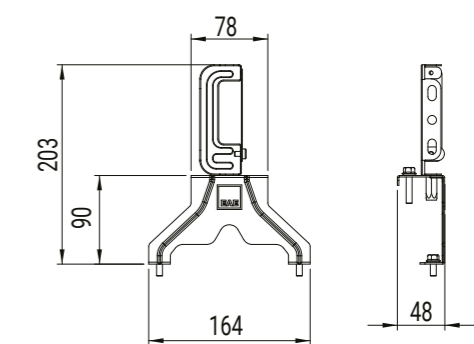
Technical Drawing



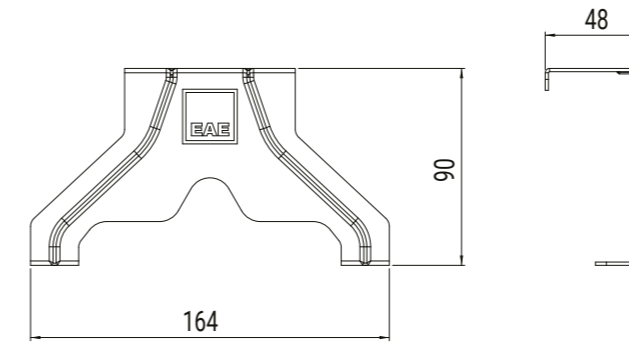
Busbar Hanger Set



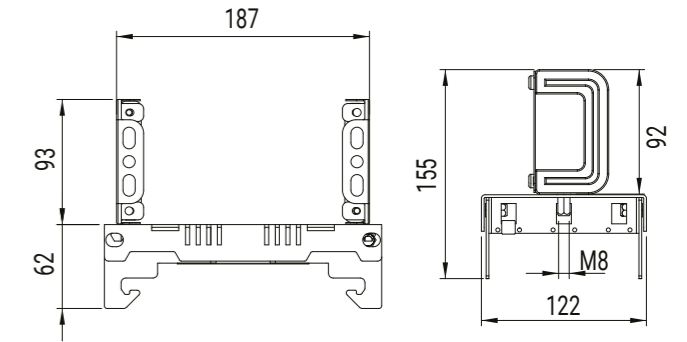
KYS Busbar Hanger Set



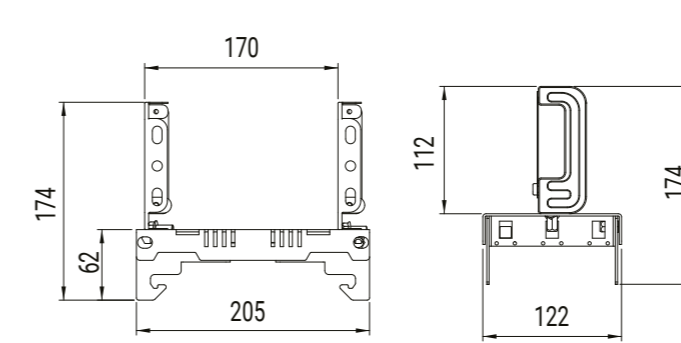
Tray Hanger Set



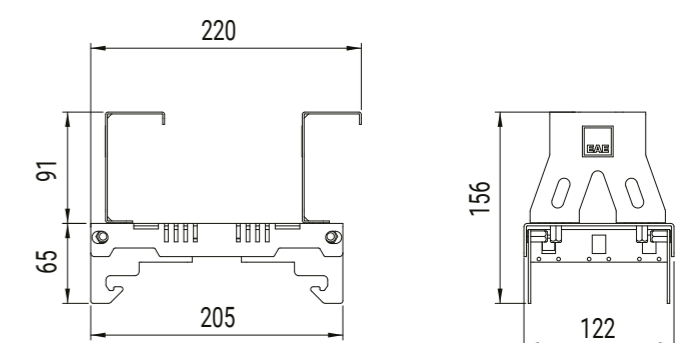
90° Busbar Hanger Set



90° KYS Busbar Hanger Set



90° Tray Hanger Set



Dimensions (mm)

	a	b	h	h1	kg
Revoled - X CR HOT+	498	203	128	75	3,7
Revoled - X CR HE	498	203	128	75	3,7
Revoled - X CR S	498	203	128	75	3,7

SROUND NG PRODUCT FAMILY



About the Product

Designed to deliver reliable performance in environments dominated by extreme temperatures and demanding industrial conditions. It operates stably between -25°C and +70°C, providing superior resistance to high heat. With IP65 protection and IK07 impact resistance, it ensures maximum durability against dust, moisture, and mechanical impacts. An external box and various mounting options offer a flexible and long-lasting lighting solution.

General Application Areas

Iron and Steel & Heavy Industry,
Industrial Areas,
Cranes



SROUND NG

95 W ~ 187 W
15.000 lm ~ 26.190 lm

Arena / Lowbay



SROUND NG HOT

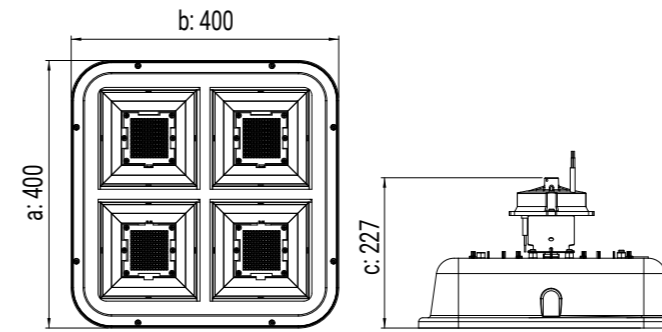
52 W ~ 108 W
9.000 lm ~ 18.350 lm

Arena / Lowbay

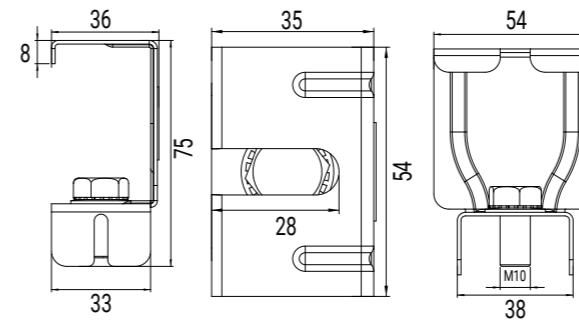
Technical Data



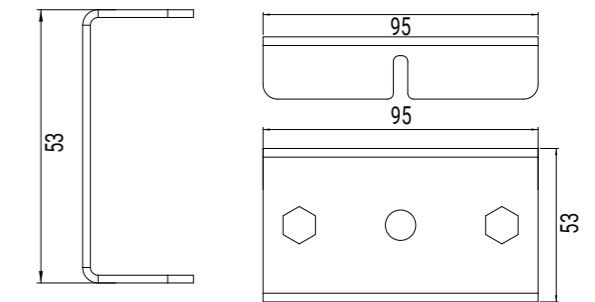
Technical Drawing - Sround NG



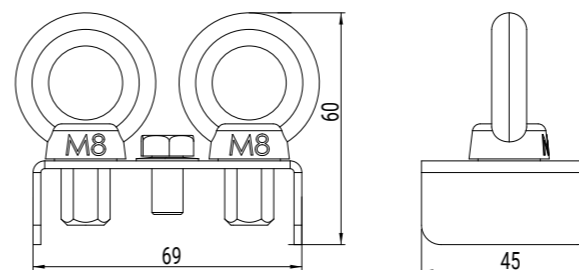
Cable Tray Hanger Set



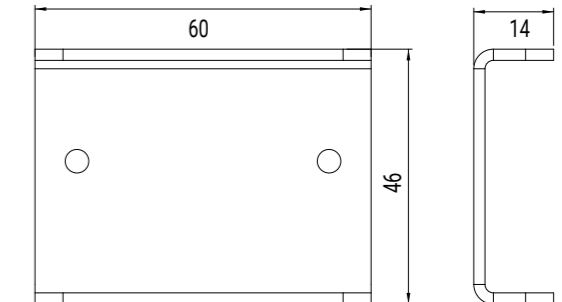
KYS and Busbar Hanger Set



M8 Eyebolt Hanger Set



Recessed Mounting Set



Dimensions (mm)

	a	b	h	kg
Sround NG	400	400	227	5,90
Sround NG ^{EMG}	400	400	245	8,30
Sround NG HOT	400	400	227	5,90

SROUND INDUSTRY



About the Product

Designed to deliver reliable performance in environments dominated by extreme temperatures and demanding industrial conditions. It operates steadily between -25°C and +60°C, providing superior resistance to high heat. With IP66 protection and IK09 impact resistance, it ensures maximum durability against dust, moisture, and mechanical impact. An external box and various mounting options offer a flexible and long-lasting lighting solution.

General Application Areas

Iron and Steel & Heavy Industry,
Industrial Areas
Cranes



SROUND Industry

52 W ~ 217 W
8.000 lm ~ 31.000 lm

Arena / Lowbay

SROUND Industry Double

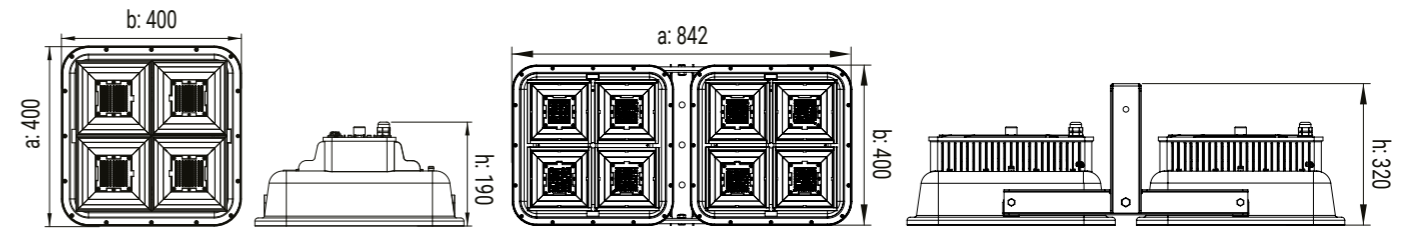
188 W
31.220 lm

Arena / Lowbay

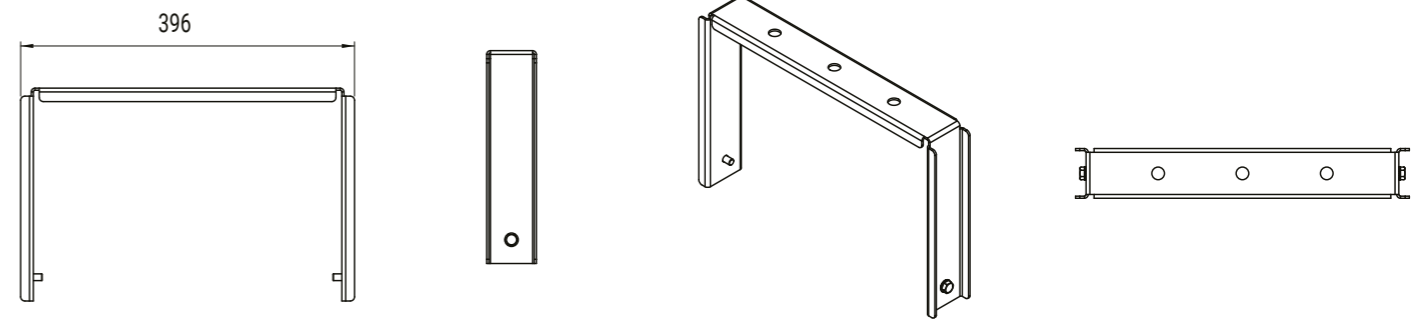
Technical Data



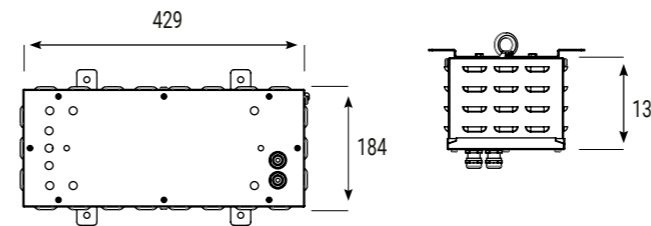
Technical Drawing - Industry



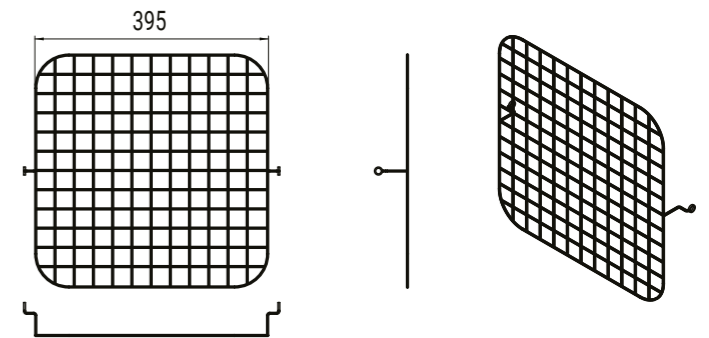
Single U-Type Hanger Set



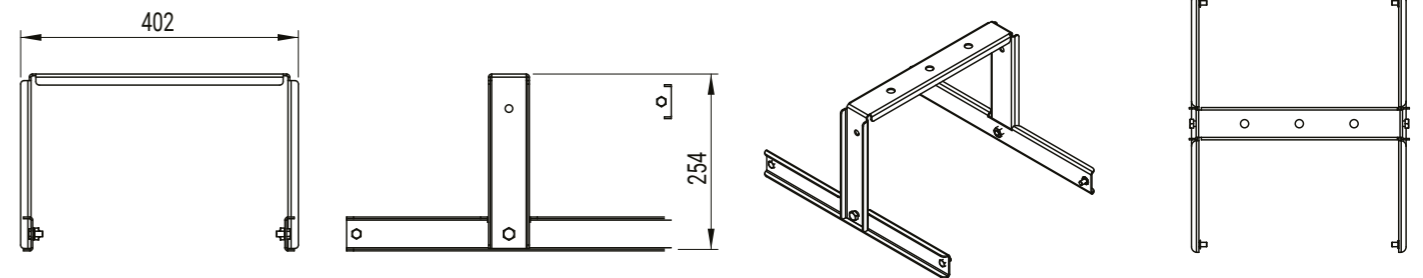
External Driver Module



Wire Guard Drawing



Double Hanger Set

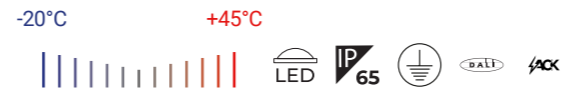


Dimensions (mm)

	a	b	h	kg
Sround Industry	400	400	190	-
Sround Double	842	400	320	-

HBL

PRODUCT FAMILY



About the Product

HBL is a high-performance LED luminaire developed for high-bay applications. With IP65 protection and IK10 impact resistance, it is highly durable against demanding conditions. It delivers stable performance within an operating range of -20°C to +45°C. Its die-cast aluminum body, silk screened glass structure, and compatibility with sensors and emergency kits ensure long-lasting and efficient lighting.

General Application Areas

Industrial Facilities,
Aviation and Airports,
Logistics,
Sports Halls



HBL V6

109 W ~ 235 W
18.000 lm ~ 37.000 lm

60° / 90°



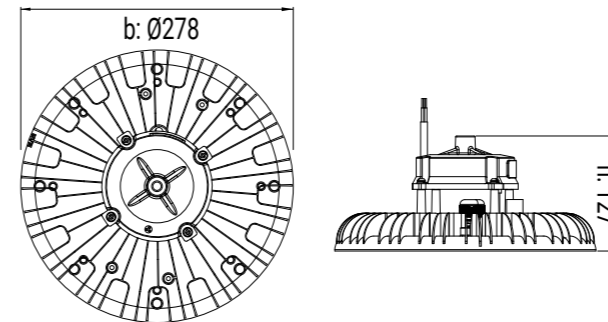
HBL HE V6

109 W ~ 235 W
18.000 lm ~ 42.400 lm

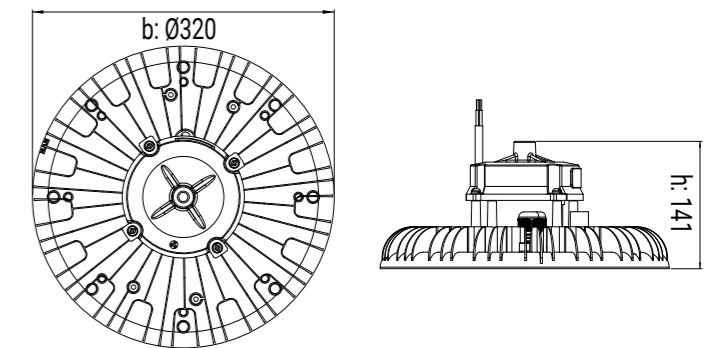
60° / 90°

Technical Data

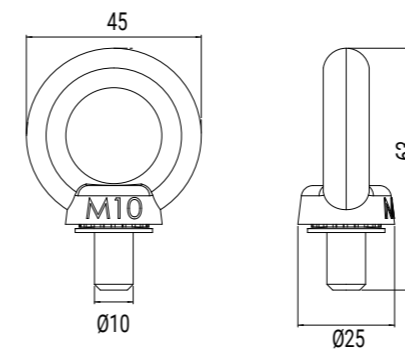
Technical Drawing - 109W / 144 W / 178 W



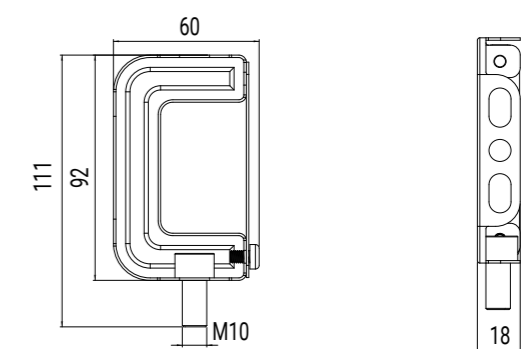
Technical Drawing - 139 W / 186 W / 235 W



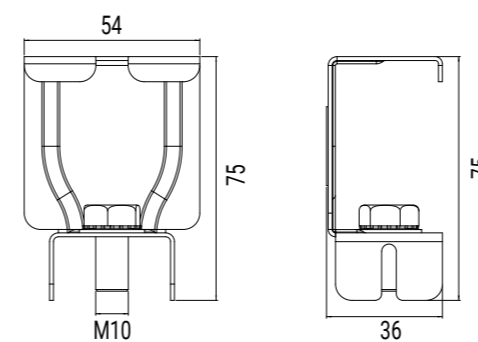
Eyebolt Hanger Set



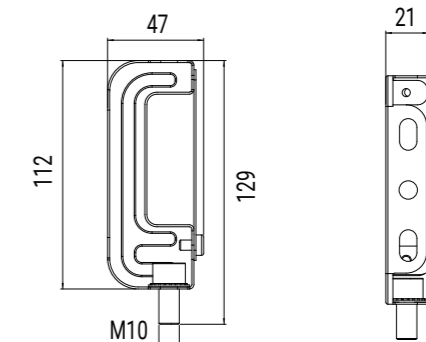
Busbar Hanger Set



Cable Tray Hanger Set



KYS Busbar Hanger Set



Dimensions (mm)

	a	b	h	kg
HBL V6	-	Ø278 / Ø320	127 / 141	2,3 / 2,7
HBL HE V6	-	Ø278 / Ø320	127 / 141	2,3 / 2,7

GARLED MEGA

PRODUCT FAMILY



About the Product

Garled Mega is a powerful and durable LED lighting solution developed for high-bay areas. With IP65 protection and IK09 impact resistance, it operates reliably in demanding industrial environments. It delivers stable performance between -20°C and +50°C. Offering five different size options – 1x, 2x, 3x, 4x, and 5x – it provides flexibility in project planning.

General Application Areas

Parking Areas,
Warehouses,
Wet and Humid Environments

46 W ~ 285 W
7.000 lm ~ 47.000 lm

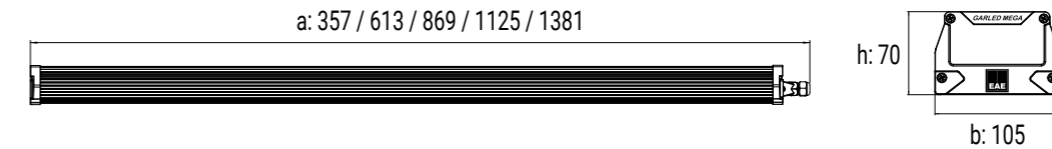
15° / 25° / 40° / 60° / 90° / Asymmetric



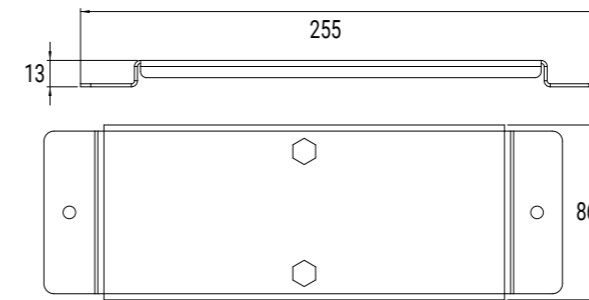
Technical Data



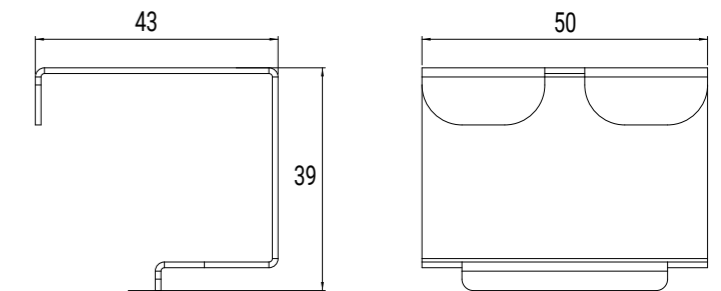
Technical Drawing



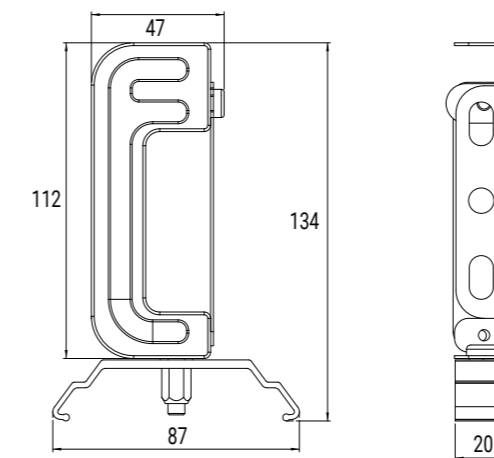
90° Angle Hanger Set



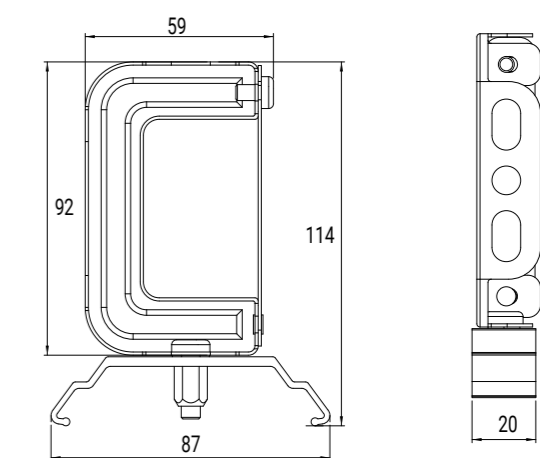
Tray Hanger Set



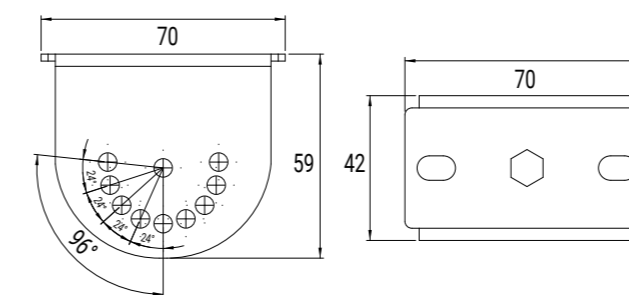
KYS Busbar Hanger Set



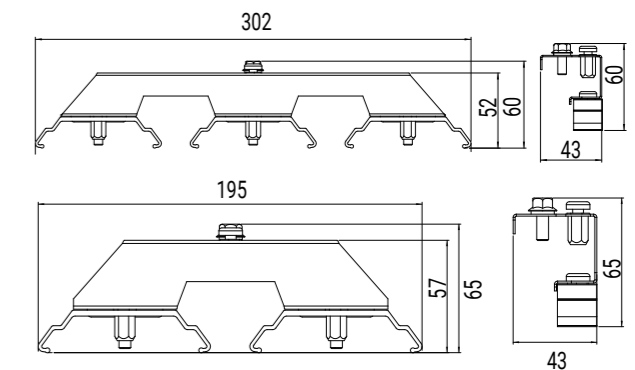
Busbar Hanger Set



90° Angle Hanger Set



3x and 2x Hanger Set



Dimensions (mm)

Ürün	a	b	h	kg
Garled Mega 1x	357	105	70	1,02
Garled Mega 2x	613	105	70	1,70
Garled Mega 3x	869	105	70	2,35
Garled Mega 4x	1125	105	70	3,10
Garled Mega 5x	1381	105	70	3,73
Garled Mega 2x1	195	65	43	-
Garled Mega 3x1	302	60	43	-

REVERO S NG



About the Product

Revero S NG is a high-performance LED lighting solution developed for applications in industrial facilities where long service life and energy efficiency are essential. With IP65 protection and IK03 impact resistance, it ensures reliable use in production, warehouse, and logistics areas. Offering various optical and mounting options, it provides uniform light distribution, while DALI control support enables efficient and flexible project planning.

General Application Areas

Logistics, Automotive, Machinery and Electronics, Airports, Glass and Ceramics, Chemicals and Plastics, Wood and Ceramics

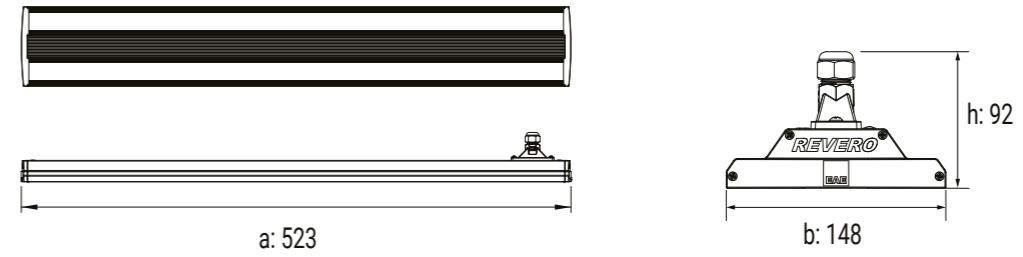
62 W ~ 132 W
8.373 lm ~ 20.835 lm

90° / 105° / Opal Diffuser

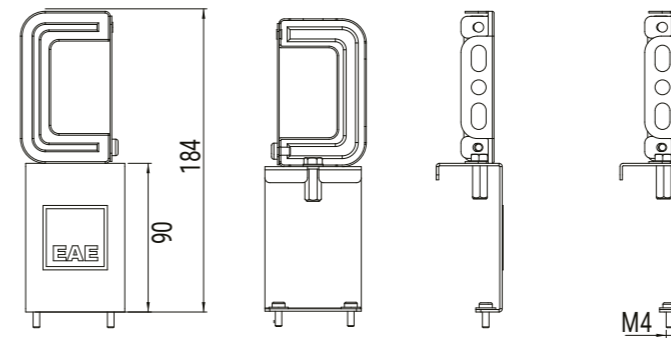


Technical Data

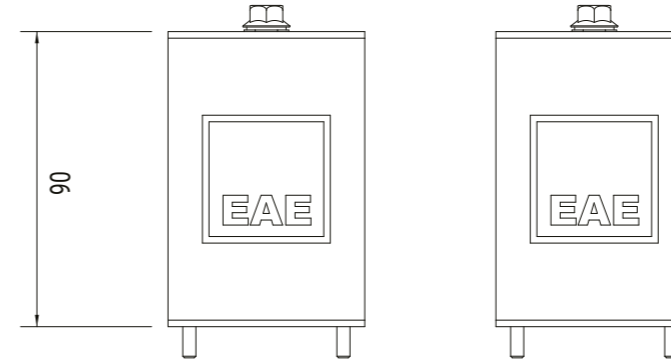
Technical Drawing



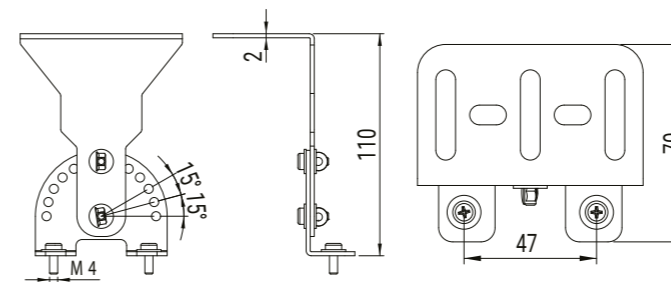
Bara Hanger Set



Tray Hanger Set



Angle Hanger Set



Dimensions (mm)

	a	b	h	kg
Revero S NG	523	148	92	1,90



RERERO NG



About the Product

Designed for cost-effective solutions, this linear LED luminaire delivers reliable performance in indoor applications with IP64 protection and IK08 impact resistance. Its lightweight body ensures easy installation and maintenance. Operating stably between -20°C and +35°C, it is an ideal choice for energy-efficient projects.

General Application Areas

Enclosed Warehouses,
Factories and Workshops,
Sports Halls,
Service Stations,
Commercial Buildings



RERERO LENS

50 W ~ 115 W
6.579 lm ~ 16.321 lm

30° - 90° / 60° / 90° (Tempered Glass)



RERERO NG

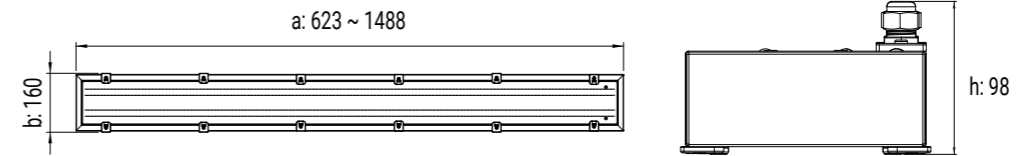
70 W ~ 150 W
8.600 lm ~ 18.000 lm

Tempered Sandblasted Glass

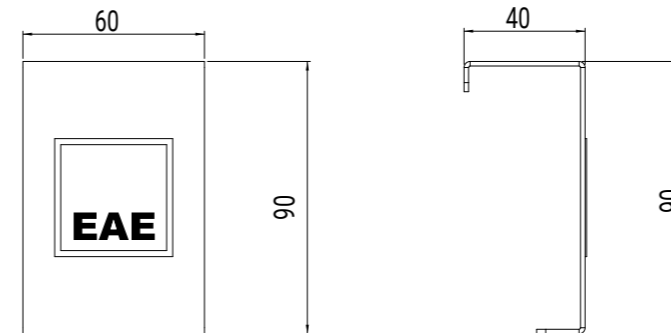
Technical Data



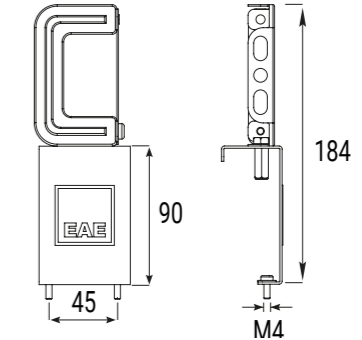
Technical Drawing



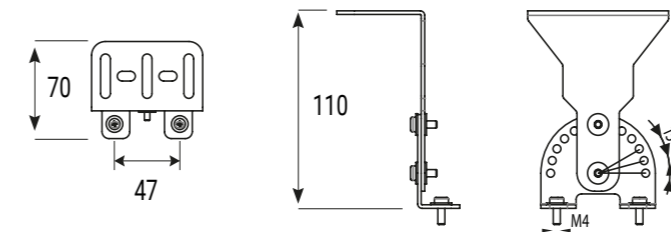
Cable Tray Hanger Set



Busbar Hanger Set (SL / DL)



Adjustable Angle Hanger Set



Dimensions (mm)

	a	b	h	kg
Rerero S NG	623 ~ 1488	160	98	3,10

RERERO

SQ



About the Product

Designed with a focus on energy efficiency, this high-bay LED luminaire delivers powerful and balanced illumination with low energy consumption. With IP64 protection and IK09 impact resistance, it ensures reliable use in indoor environments. It operates stably between -20°C and +50°C and offers flexible solutions with emergency and DALI control options.

General Application Areas

Logistics, Automotive, Machinery and Electronics, Airports, Glass and Ceramics, Chemicals and Plastics, Wood and Ceramics

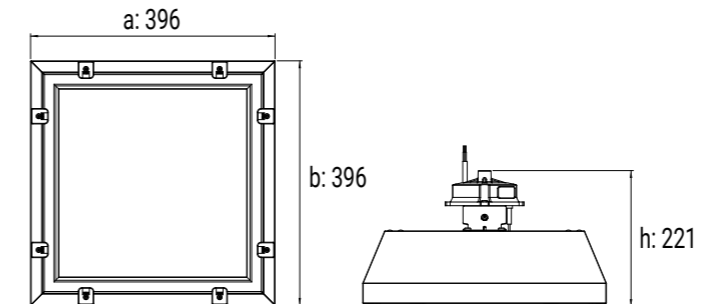
70 W ~ 133 W
11.600 lm ~ 20.000 lm

Arena / Lowbay

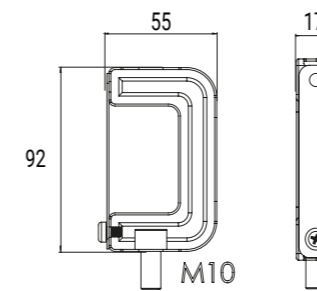


Technical Data

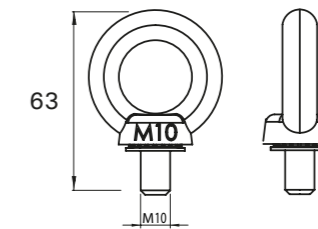
Technical Drawing



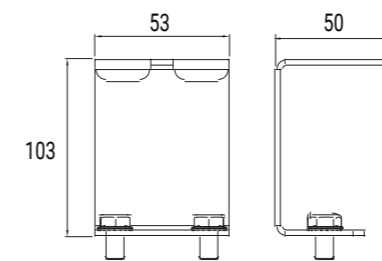
Busbar Hanger Set (SL / DL)



Eyebolt Hanger Set



Cable Tray Hanger Set



Dimensions (mm)

	a	b	h	kg
Rerero SQ	396	396	221	4,9





Floodlights

PROLIT KOMPAKT PRODUCT FAMILY



About the Product

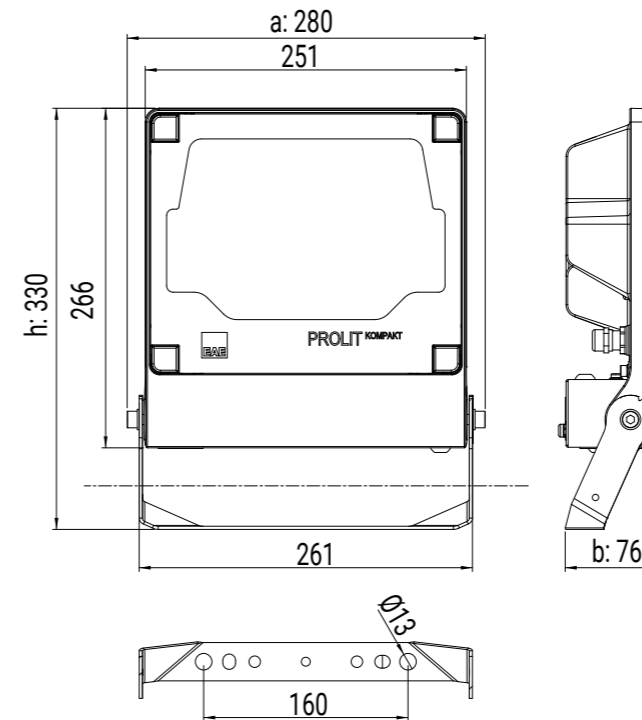
Despite their compact design, these LED floodlights deliver high performance. With IP66 protection and IK09 impact resistance, they are suitable for demanding conditions. They operate stably between -40°C and +65°C. With DALI and on-off control options, they provide up to 70% energy savings compared to conventional floodlights.

General Application Areas

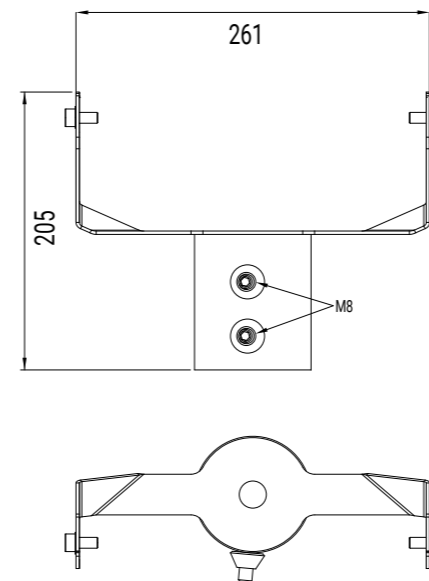
Logistics, Shipyards,
Tanker Loading and Unloading Areas,
Oil Refineries,
Coastal Facilities,
Marine and Shipbuilding,
Aircraft Hangars

Technical Data

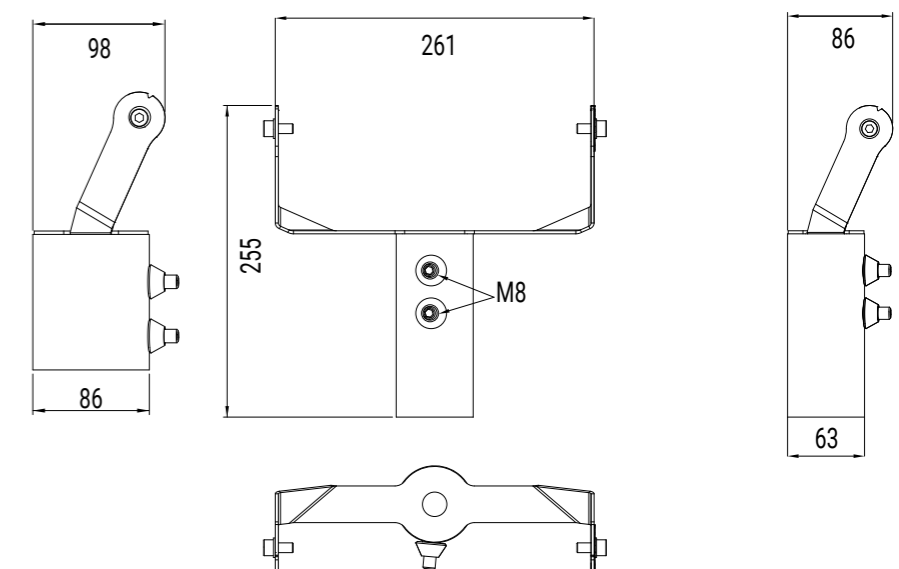
Technical Drawing



Ø76 Pipe Hanger Set



Ø42 - Ø48 Pipe Hanger Set



PROLIT Kompakt

30 W ~ 111 W
4.000 lm ~ 14.400 lm

16° / 22° / 27° / 35° / 52° / 60° / 90° / 98° / 99° / Asymmetric° / Sport Lens / 0 Tilt



PROLIT Kompakt Mid Power

60 W - 95 W
7.000 lm - 11.400 lm

18° / 23° / 35° / 46° / 60° / 90° / Asymmetric° / 0 Tilt



PROLIT Kompakt NG

124 W
12.400 lm

16° / 27° / 52° / 98° / Asymmetric° / 0 Tilt



PROLIT Kompakt Mid Power NG

65 W - 90 W
9.500 lm - 11.700 lm

18° / 23° / 30° / 46° / 60° / 90° / Asymmetric° / 0 Tilt

Dimensions (mm)

	a	b	h	kg
Prolit Kompakt	280	76	330	3,6
Prolit Kompakt Mid Power	280	76	330	3,6
Prolit Kompakt NG	280	76	330	4
Prolit Kompakt Mid Power NG	280	76	330	3,7

PROLIT

PRODUCT FAMILY



About the Product

The Prolit Product Family consists of powerful LED floodlights developed for applications requiring ultra-high luminous output. With IP66 protection and IK09 impact resistance, it offers high durability against demanding conditions. It operates stably between -40°C and +70°C. DALI, DIMKO, RF, and on-off control options provide a flexible and efficient solution.

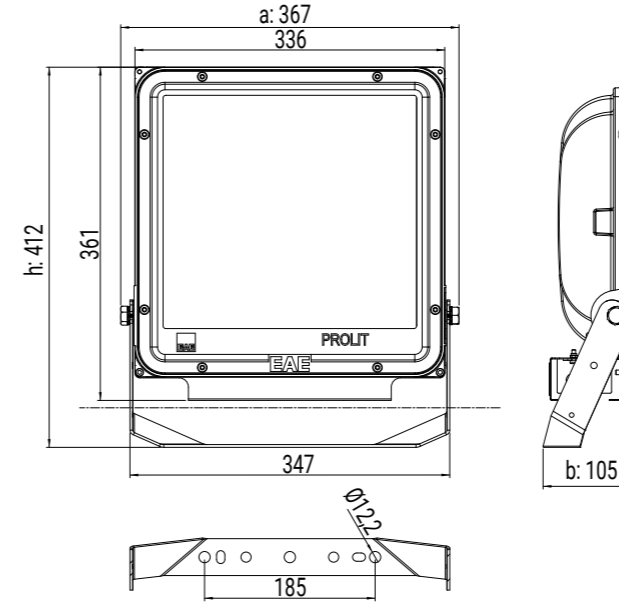
General Application Areas

- Outdoor Areas,
- Ports,
- Sports Halls,
- Industrial Facilities,
- Parking Areas,
- Billboards,
- Building Facades

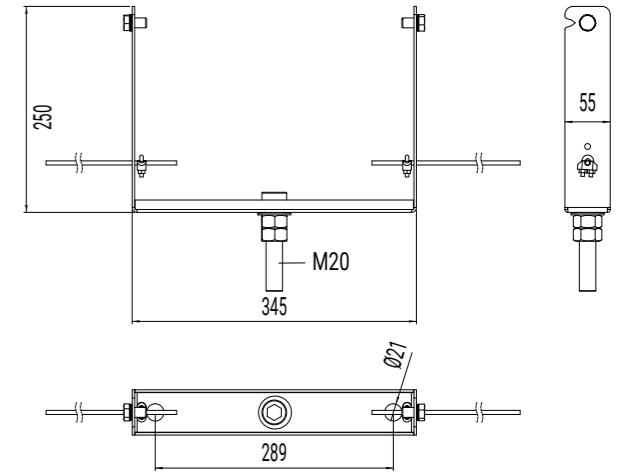
Technical Data



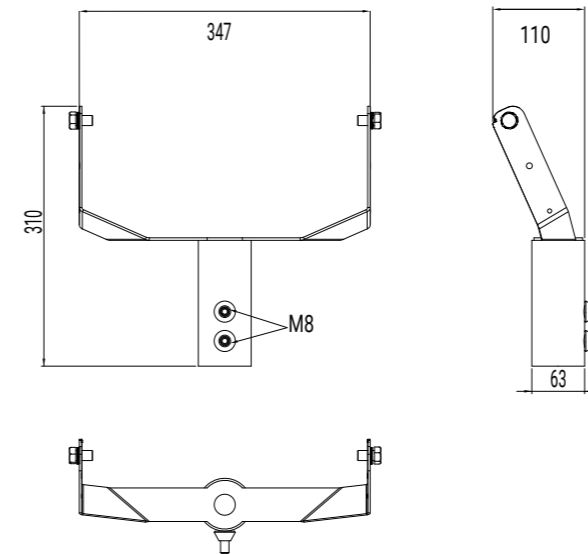
Technical Drawing



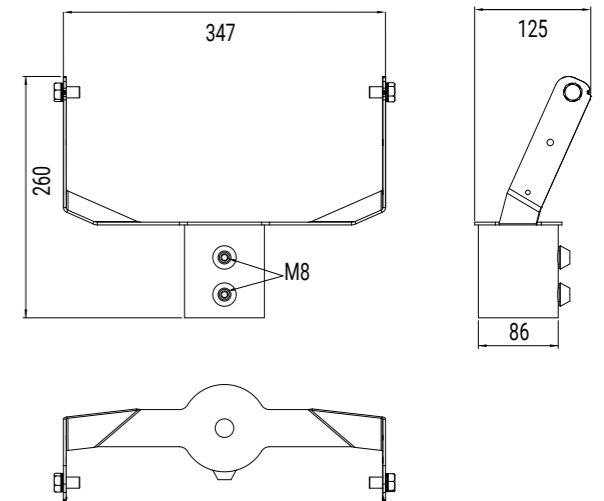
Easy Installation Hanger Set



Ø42 - Ø48 Hanger Set



Ø76 Pipe Hanger Set



PROLIT V3

102 W ~ 230 W
14.100 lm ~ 28.300 lm
13° / 22° / 32° / 57° / 99° /
Asymmetric° / Sport Lens / 0 Tilt



PROLIT Mid Power

94 W ~ 230 W
12.700 lm - 28.300 lm
18° / 23° / 30° / 46° / 60° / 90° /
Asymmetric° / 0 Tilt



PROLIT NG

100 W ~ 200 W
11.900 lm ~ 22.600 lm
10° / 16° / 27° / 52° / 98° /
Sport Lens / Asymmetric° / 0 Tilt



PROLIT Mid Power NG

105 W ~ 235 W
14.400 lm - 29.700 lm
18° / 23° / 30° / 46° / 60° / 90° /
Asymmetric° / 0 Tilt

Dimensions (mm)

	a	b	h	kg
Prolit	367	105	413	7,1
Prolit Mid Power	367	105	413	6,8
Prolit NG	367	105	413	7
Proli Mid Power NG	367	105	413	7

PROLIT PLUS PRODUCT FAMILY



About the Product

This LED floodlight delivers high performance in large-area applications. With IP66 protection and IK09 impact resistance, it provides a reliable solution for demanding conditions. It operates stably between -40°C and +70°C. DALI, 1-10V, DIMKO, and RF control options offer flexible and efficient lighting solutions.

General Application Areas

Ports,
Sports Halls,
Industrial Facilities,
Parking Areas,
Building Facades



PROLIT Plus

202 W ~ 854 W
26.300 lm ~ 111.800 lm

16° / 22° / 27° / 52° / 57° / 98° / 99°
Asymmetric° / Sport Lens



PROLIT Plus Mid Power

275 W ~ 435 W
35.400 lm ~ 58.700 lm

18° / 23° / 30° / 46° / 60° / 90° /
Asymmetric° / 0 Tilt



PROLIT Plus NG

195 W ~ 400 W
25.500 lm ~ 51.000 lm

10° / 16° / 27° / 52° / 98° /
Sport Lens / Asymmetric° / 0 Tilt



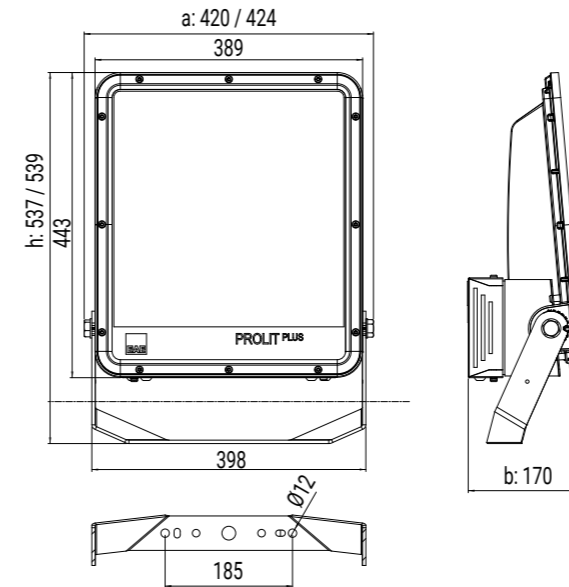
PROLIT Plus Mid Power NG

260 W ~ 455 W
37.500 lm ~ 63.300 lm

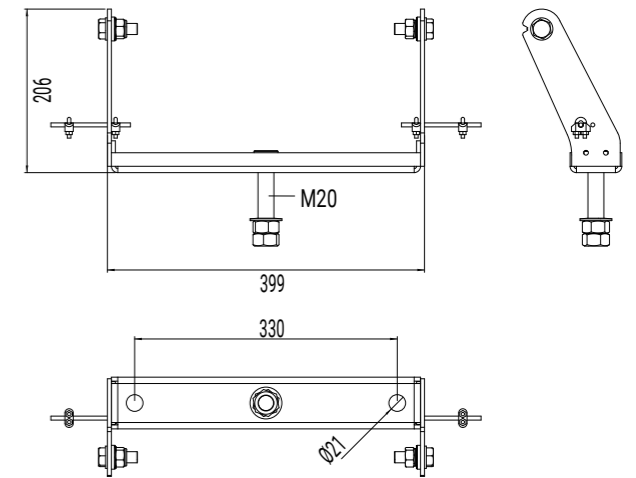
18° / 23° / 30° / 46° / 60° / 90° /
Asymmetric° / 0 Tilt

Technical Data

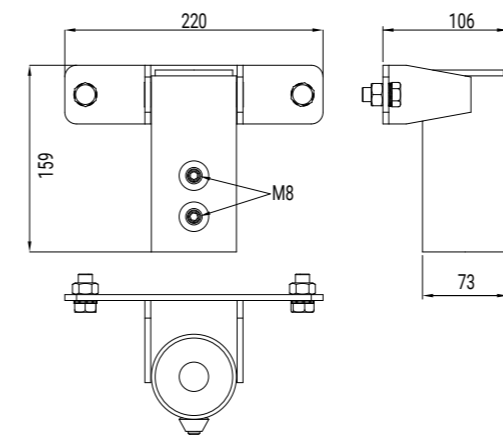
Technical Drawing



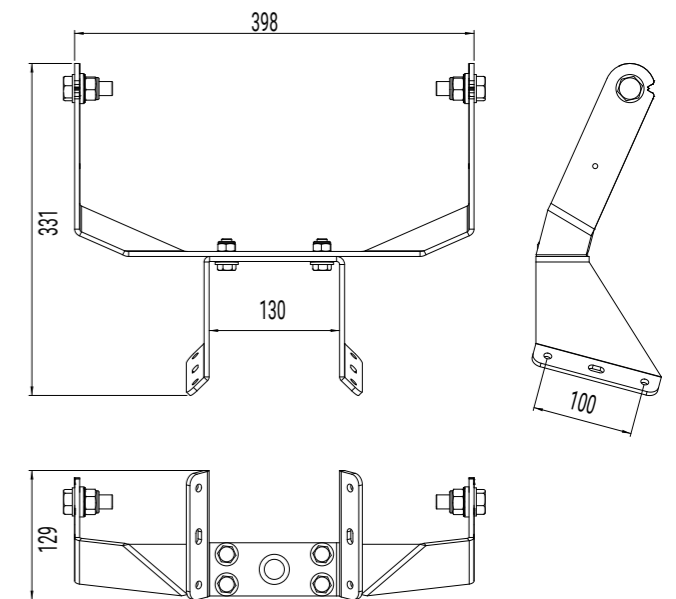
Easy Mount Hanger Set



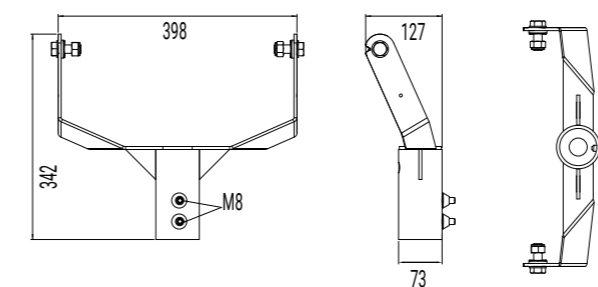
Ø60 Vertical Pipe Hanger Set



Corner Hanger Set



Ø60 Horizontal Pipe Hanger Set



Dimensions (mm)

	a	b	h	kg
Prolit Plus	424	171	537	11,5
Prolit Plus Mid Power	424	171	537	13
Prolit Plus NG	424	171	537	11,5
Prolit Plus Mid Power NG	420	170	539	11,3



PROLIT

EFFECT PRODUCT FAMILY



About the Product

This advanced LED floodlight stands out with its lightweight structure and high efficiency. With IP66 protection and IK09 impact resistance, it is durable against demanding conditions. It operates stably between -40°C and +65°C. Its special glass surface, along with DALI and on-off control support, ensures long-lasting and controlled illumination.

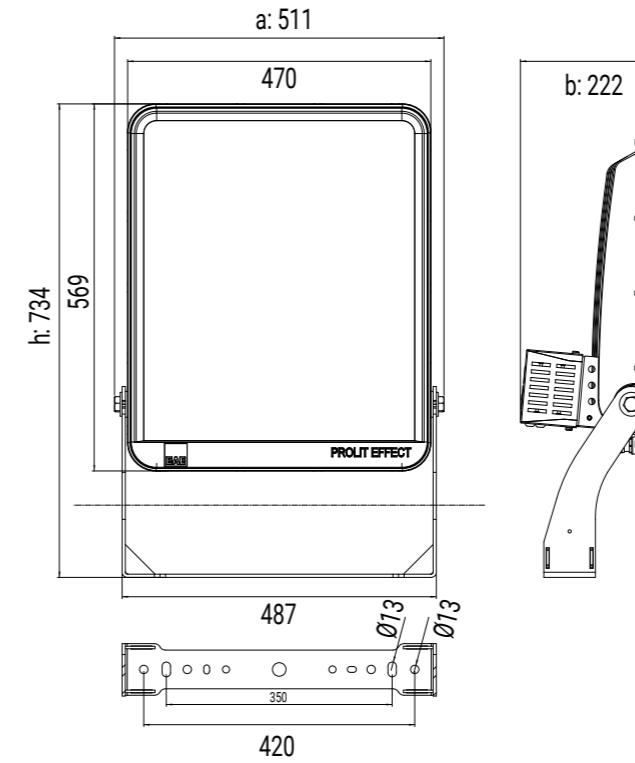
General Application Areas

Shipyards,
Ports,
Marine and Shipbuilding,
Aircraft Hangars,
Square Lighting



Technical Data

Technical Drawing



PROLIT Effect

420 W ~ 770 W
56.700 lm ~ 102.400 lm

13° / 22° / 57° / Asymmetric° / 0 Tilt



PROLIT Effect Mid Power

436 W ~ 845 W
58.000 lm ~ 103.000 lm

18° / 23° / 30° / 46° / 60° / 90° /
Asymmetric° / 0 Tilt



PROLIT Effect NG

415 W ~ 753 W
56.000 lm ~ 86.400 lm

10° / 16° / 27° / 54° / 98° /
Asymmetric° / 0 Tilt



PROLIT Effect Mid Power NG

470 W ~ 765 W
68.900 lm ~ 100.000 lm

18° / 23° / 30° / 46° / 60° / 90° /
Asymmetric° / 0 Tilt

Dimensions (mm)

	a	b	h	kg
Prolit Effect	511	734	222	24,4
Prolit Effect Mid Power	511	734	222	18,8
Prolit Effect NG	511	734	222	24,4
Prolit Effect Mid Power NG	511	734	222	19,3



VALERIA



About the Product

Designed to provide powerful and uniform illumination in large areas, this LED floodlight offers high resistance to outdoor conditions with IP66 protection and IK08 impact resistance. It operates stably between -20°C and +40°C. With DALI control support, it delivers efficient and flexible lighting solutions.

General Application Areas

Outdoor Areas, Ports,
Sports Halls, Industrial Facilities,
Parking Areas, Billboards,
Building Facades

46 W ~ 292 W
5.616 lm ~ 37.938 lm

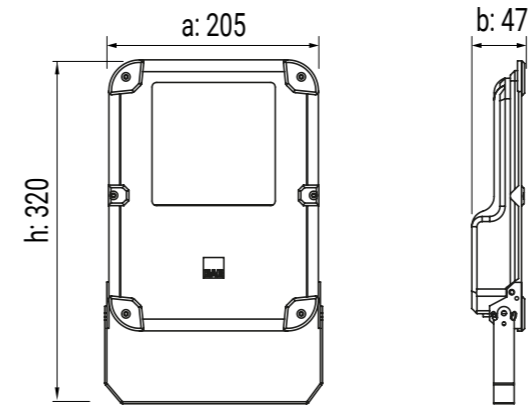
Asymmetric / 15° / 20° / 30° / 40° / 60° / 90°



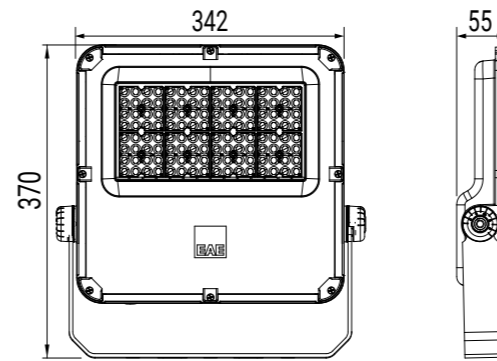
Technical Data



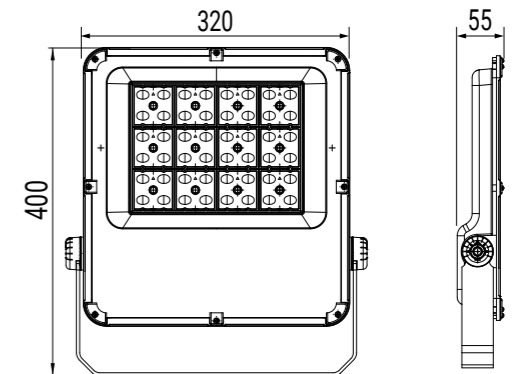
Technical Drawing - 46W



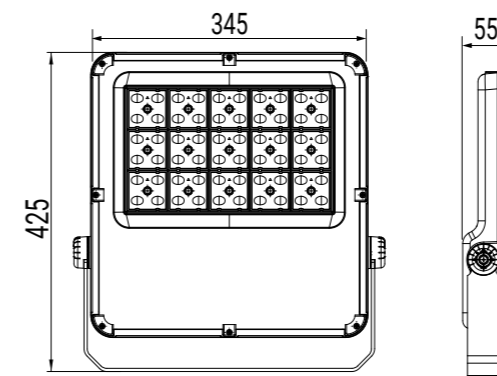
Technical Drawing - 100W



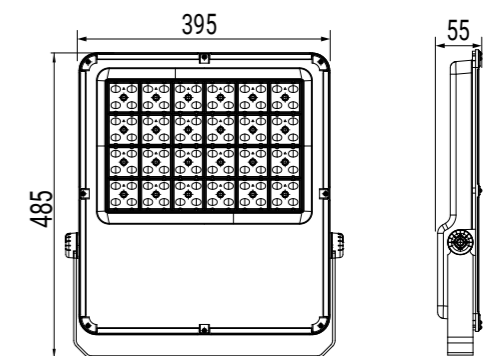
Technical Drawing - 150W



Technical Drawing - 292W



Technical Drawing - 292W

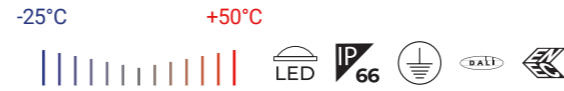


Dimensions (mm)

	a	b	h	kg
Valeria - 46W	320	47	205	1,65
Valeria - 100W	370	55	342	2,99
Valeria - 144W	400	55	320	4,35
Valeria - 193W	425	55	345	4,35
Valeria - 292W	485	65	395	6,85

GPRONA

PRODUCT FAMILY



About the Product

GPRONA is a high-performance LED floodlight with asymmetric optics, designed for heavy industry and port environments. With IP66 protection and IK09 impact resistance, it ensures long-lasting durability against harsh environmental conditions. It operates safely between -25°C and +50°C. DALI, RF, and 1-10V control options provide flexible and professional lighting solutions.

General Application Areas

- Shipyards,
- Ports,
- Marine and Shipbuilding,
- Aircraft Hangars,
- Cruise Ship Facades

GPRONA V2

135 W ~ 463 W
21.400 lm ~ 74.200 lm

Special Asymmetric Reflector

GPRONA MINI

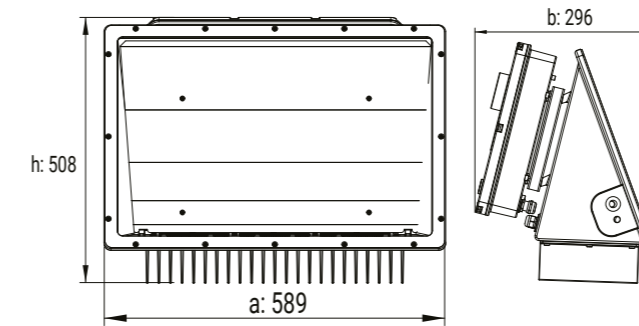
185 W ~ 241 W
29.438 lm ~ 36.286 lm

Special Asymmetric Reflector

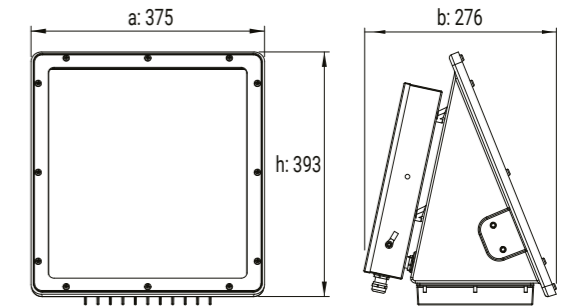
Technical Data



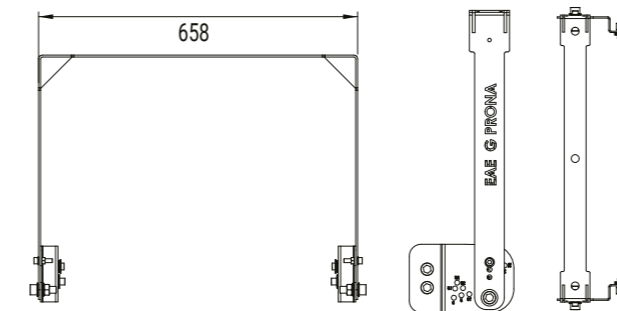
Technical Drawing - Gprona V2



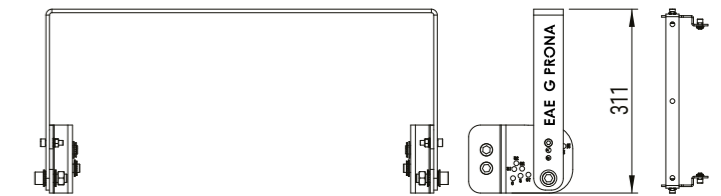
Technical Drawing - Gprona Mini



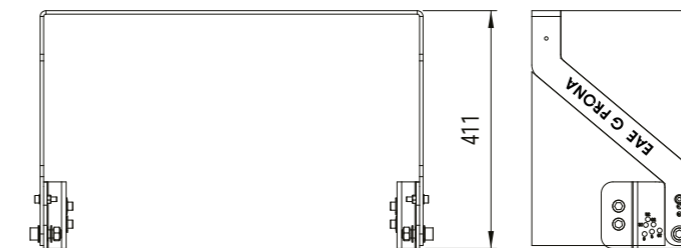
Standard Long Hanger Set



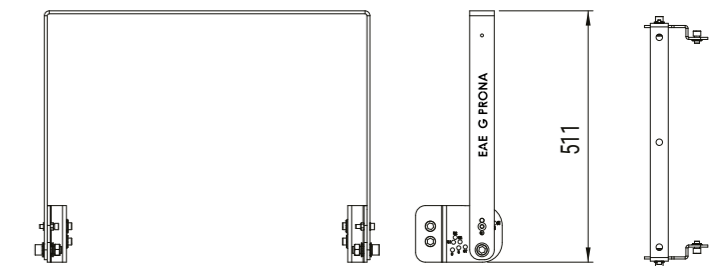
Standard Short Hanger Set



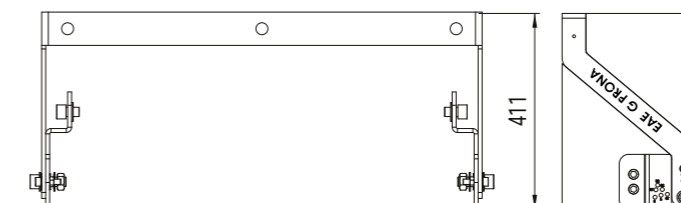
T Type Hanger Set



U Type Hanger Set



Angle Hanger Set



Dimensions (mm)

	a	b	h	kg
Gprona V2	589	296	508	22,00 - 31,50
Gprona Mini	420	375	376	11,8

SPRONA



About the Product

A heavy-duty LED floodlight designed for extreme environmental conditions. Its aluminum housing, IP66 protection rating, and IK09 impact resistance ensure reliable performance in demanding outdoor environments. It operates stably between -25°C and +45°C. With its modular structure and dedicated mounting set, it easily adapts to port and industrial applications.

General Application Areas

Shipyards,
Ports,
Marine and Shipbuilding,
Aircraft Hangars,
Cruise Ship Facades

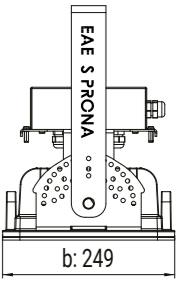
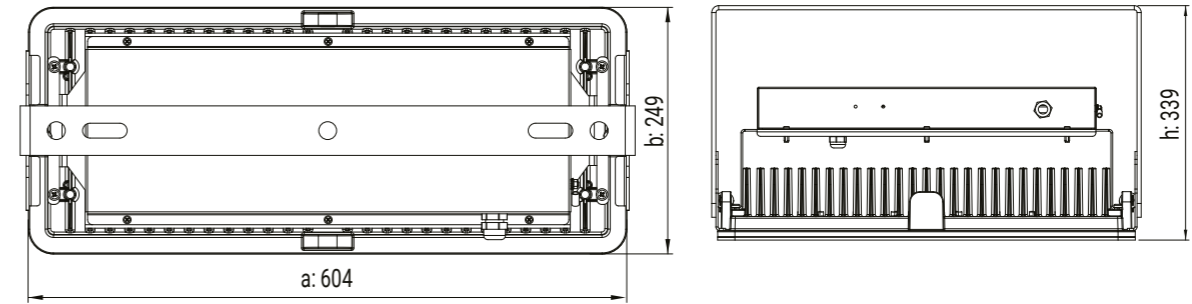
348 W
51.500 lm

20° / 35° / 60°

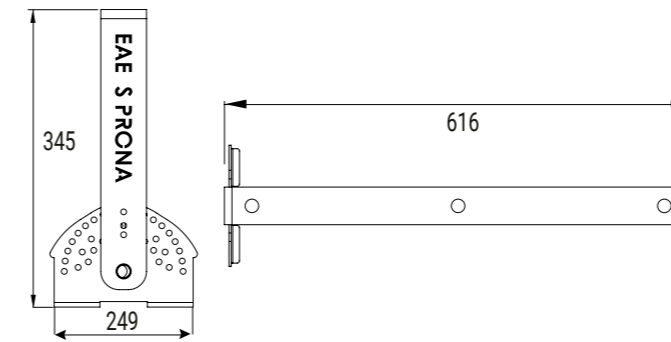


Technical Data

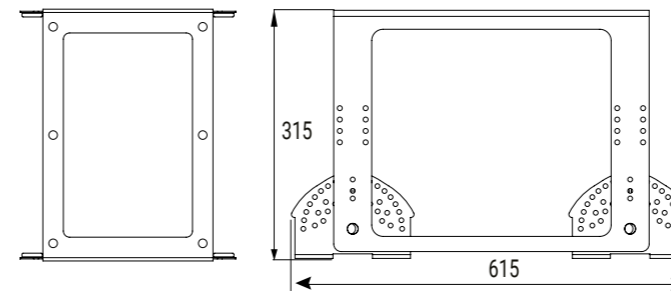
Technical Drawing



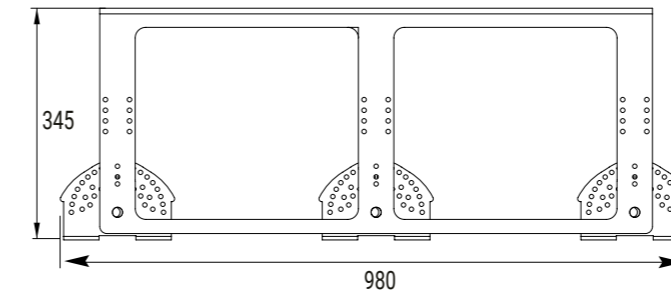
Single Hanger Set



Double Hanger Set



Triple Hanger Set



Dimensions (mm)

	a	b	h	kg
Sprona	604	249	399	15,45



Linear Lighting

INFINOO

PRODUCT FAMILY



About the Product

A high-performance solution developed for industrial environments, operating between -20°C and +45°C. With 5-7-9-11 conductor options and 2.50 mm² conductor cross-section, it ensures strong and safe power transmission. While providing uniform light distribution, ACK, DALI, Hubsense, and 1-10 V control options enable flexible and efficient operation.

General Application Areas

Logistics,
Data Centers,
Textile,
Retail and Display,
Office and Communication,
Education and Science,
Art & Culture



INFINOO S NG

30 W ~ 74 W
5118 lm ~ 12608 lm

30° / 60° / 90° / Asymmetric (AS) / Double Asymmetric (DA) / 30x90° / 25x105°



INFINOO IP64 S NG

30 W ~ 75 W
4600 lm ~ 11500 lm

Opal Diffuser



INFINOO HE S NG

29 W ~ 70 W
5339 lm ~ 13531 lm

30° / 60° / 90° / 30x90° / 25x105°



INFINOO OPAL S NG

40 W ~ 100 W
5000 lm ~ 12000 lm

Opal Diffuser



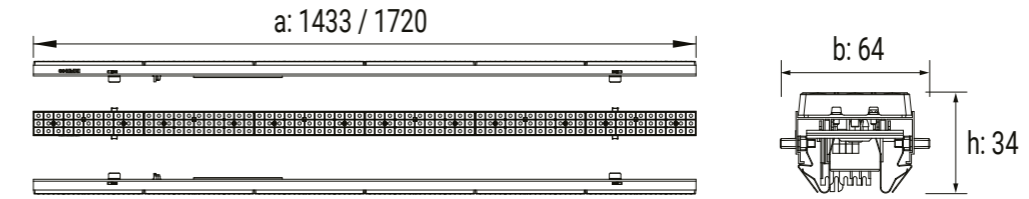
INFINOO IP64 S NG HE

28 W ~ 70 W
5000 lm ~ 12500 lm

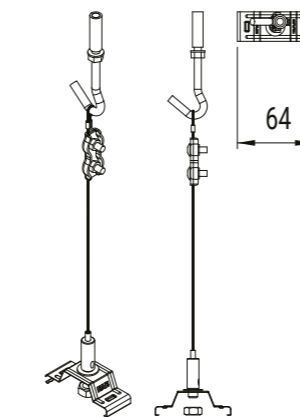
30° / 60° / 90°

Technical Data

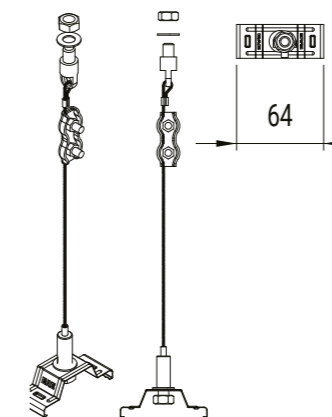
Technical Drawing



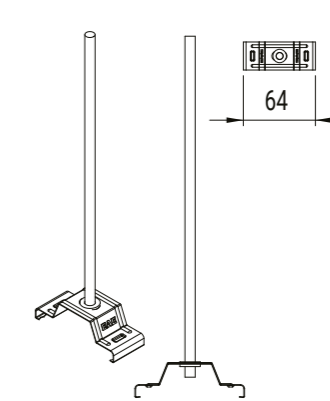
Steel Fibre-Reinforced Concrete Suspension Set



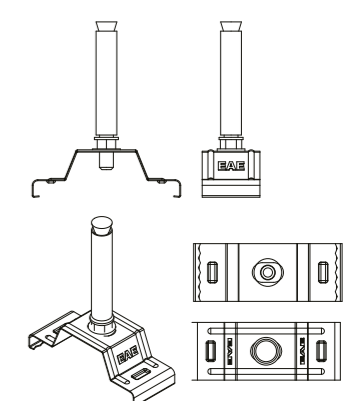
Steel Fibre-Cable Tray Suspension Set



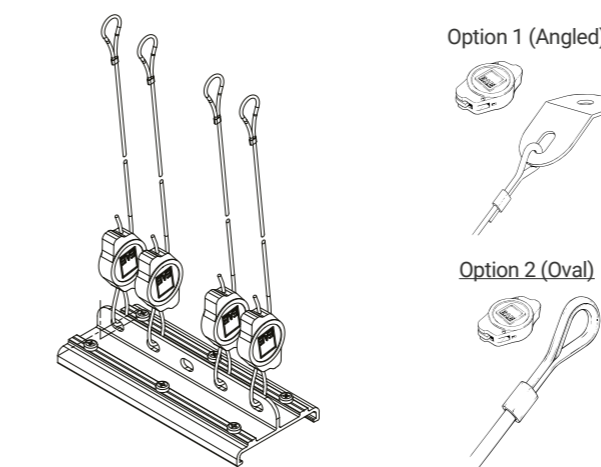
Rod-Wire Cable Tray Suspension Set



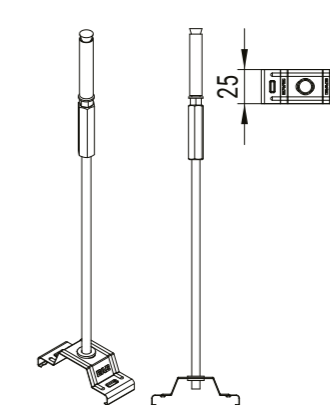
Support Spring Concrete Installation Tool



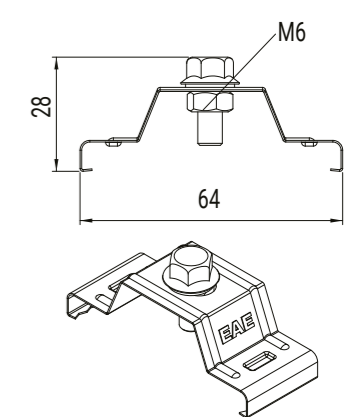
Seismic Suspension Set



Rod-Concrete Suspension Set



Support Spring Cable Tray Installation Tool



It must be installed at intervals of minimum 9 m and maximum 18 m.



Dimensions (mm)

	a	b	h	kg
Infinoo S NG	1433 / 1720	64	34	1,7 / 2,0
Infinoo HE S NG	1433 / 1720	64	34	1,7 / 2,0
Infinoo IP64 S NG HE	1433 / 1720	64	34	1,5 / 1,8
Infinoo IP64 S NG	1433 / 1720	64	34	1,5 / 1,8
Infinoo Opal S NG	1433 / 1720	64	34	1,7 / 2,5

M-LINE S-NG



About the Product

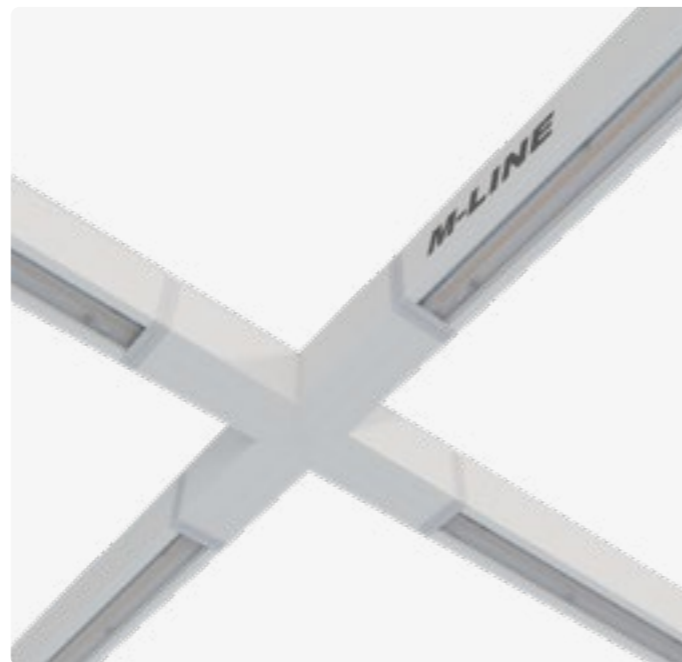
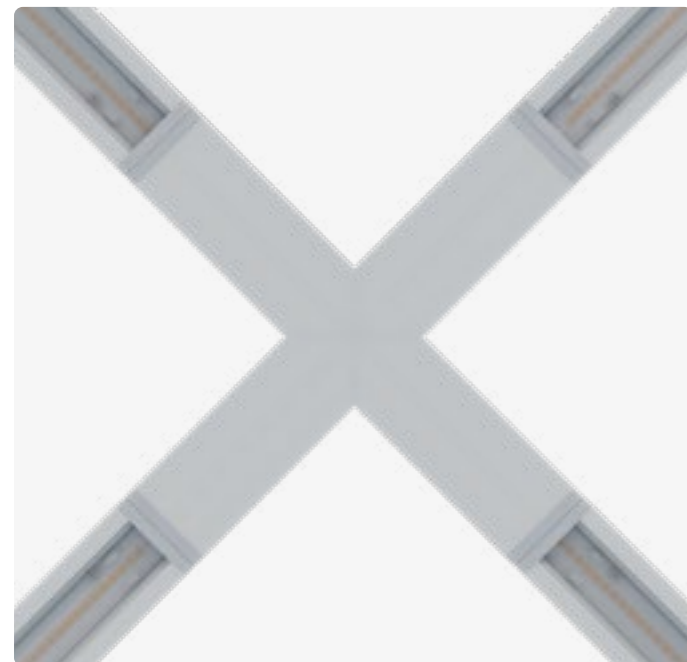
M-LINE is an economical and flexible linear LED lighting solution with a modular structure and clean design. With IP40 protection and IK03 impact resistance, it is suitable for indoor applications. It operates stably between -20°C & +40°C. The opal diffuser option, various body sizes and emergency kit compatibility ensure functional and efficient lighting.

General Application Areas

Logistics,
Education and Science,
Complexes,
Stores and Markets,
Office and Administrative Buildings

27 W ~ 100 W
3800 lm ~ 13000 lm

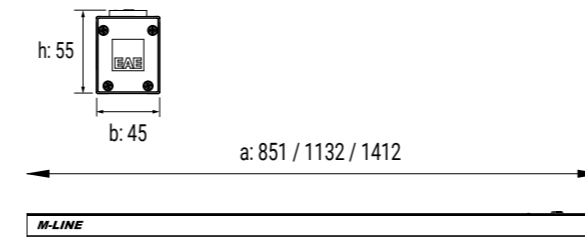
60° / 90° / Asymmetric / Double Asymmetric / 40° / Opal Diffuser



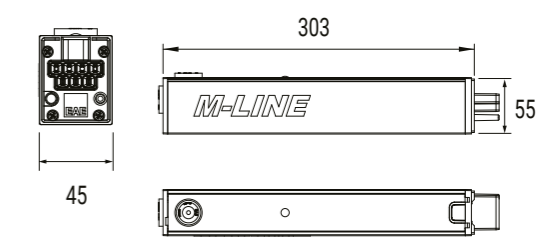
Technical Data



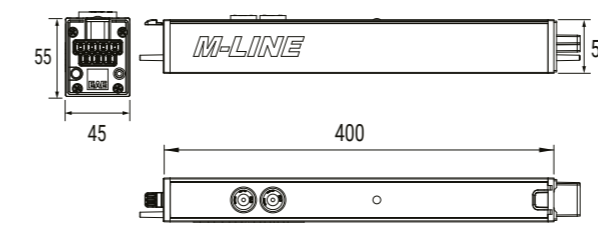
Technical Drawing



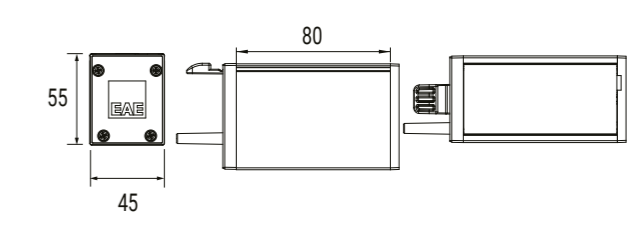
Feeding Module



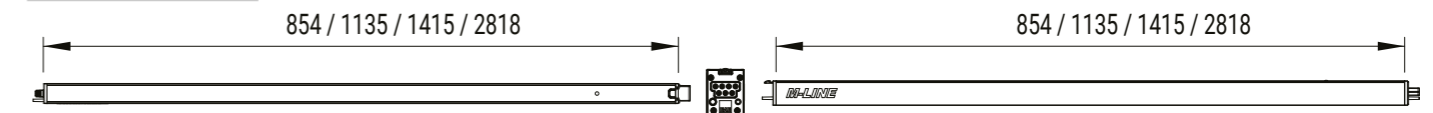
Center Feed Module



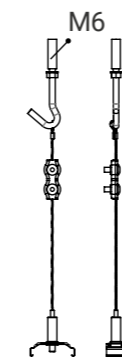
Termination Module



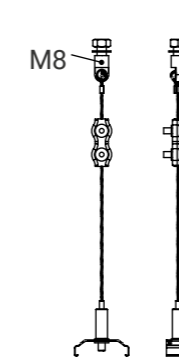
Intermediate Module



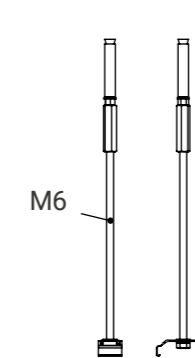
Steel Fibre-Reinforced Concrete Suspension Set



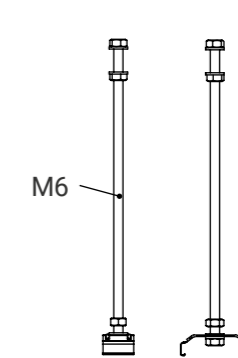
Steel Fibre-Cable Tray Suspension Set



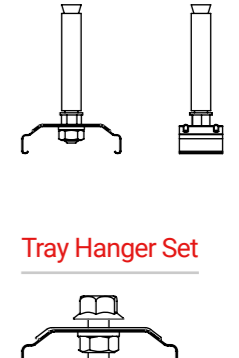
Rod Concrete Hanger Set



Rod - Cable Tray Hanger Set



Concrete Hanger Set



Tray Hanger Set



Dimensions (mm)

	a	b	h	Standard (kg)
M-Line S NG - Single Module - 90 cm	851	45	55	1,25
M-Line S NG - Single Module - 120 cm	1132	45	55	1,56
M-Line S NG - Single Module - 150 cm	1412	45	55	1,87
M-Line S NG - Intermediate Module - 90 cm	854	45	55	1,38
M-Line S NG - Intermediate Module - 120 cm	1135	45	55	1,76
M-Line S NG - Intermediate Module - 150 cm	1415	45	55	2,16
M-Line S NG - Intermediate Module - 300 cm	2818	45	55	3,71
M-Line S NG - Blank Module - 90 cm	854	45	55	0,9
M-Line S NG - Blank Module - 120 cm	1135	45	55	1,15
M-Line S NG - Blank Module - 150 cm	1415	45	55	1,39
M-Line S NG - Feeding Module	300	45	55	0,35
M-Line S NG - Termination Module	92	45	55	0,1
M-Line S NG - Center Feed Module	400	45	55	0,35

GALIS

PRODUCT FAMILY



About the Product

Galis NG HE, Galis NG, and Galis MINI are advanced LED lighting solutions offering high lm/W efficiency. With IP66 protection, they ensure reliable performance in demanding environments. Transparent glass and frosted glass options provide adaptability to different applications. They operate stably between -25°C and +45°C and support DALI control for efficient project planning.

General Application Areas

Parking Areas,
Warehouses,
Wet and Humid Environments



GALIS NG

18 W ~ 77 W
2298 lm ~ 9230 lm

Transparent Glass & Sandblasted Glass



GALIS MINI NG

10 W ~ 48 W
1200 lm ~ 5700 lm

Transparent Glass & Sandblasted Glass



GALIS NG HE

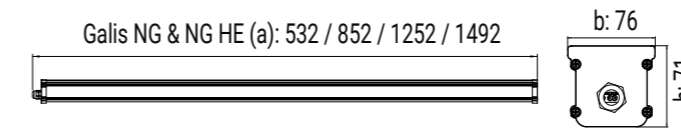
18 W ~ 71 W
2570 lm ~ 11400 lm

Transparent Glass & Sandblasted Glass

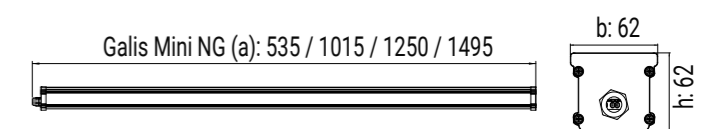
Technical Data



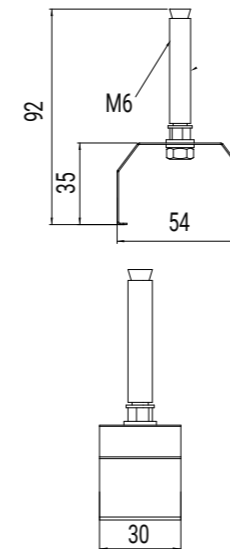
Technical Drawing - Galis NG & NG HE



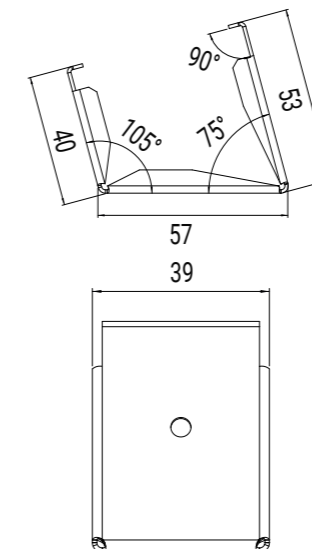
Technical Drawing - Galis Mini NG



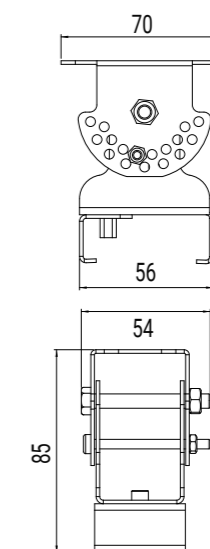
Wall Hanger Set



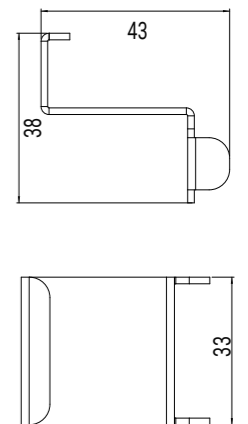
15° Angled Hanger Set



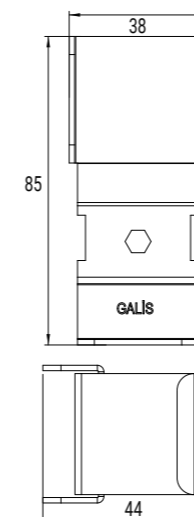
Angle Hanger Set



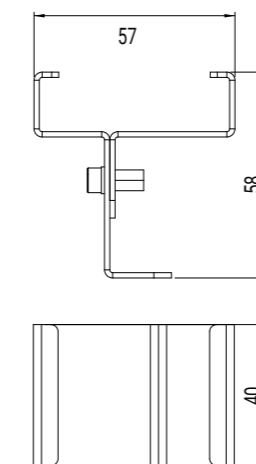
Angled Short Hanger Set



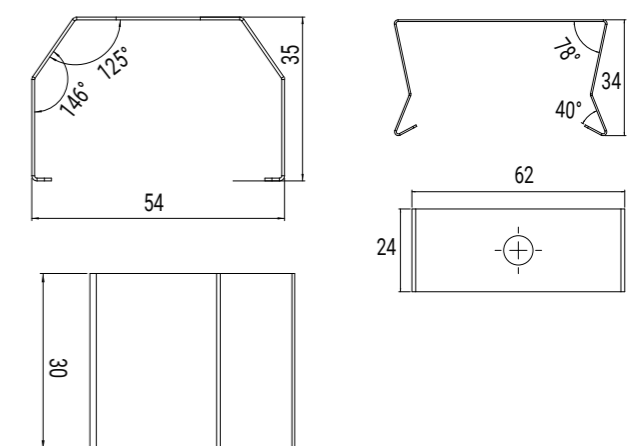
Adjustable Angle Hanger Set



Fixed Hanger Set



Suspension Spring Set



Dimensions (mm)

	a	b	h	kg
Galis NG & Galis NG HE - 53 cm	532	76	71	1,30
Galis NG & Galis NG HE - 85 cm	852	76	71	2,07
Galis NG & Galis NG HE - 125 cm	1252	76	71	2,92
Galis NG & Galis NG HE - 149 cm	1492	76	71	3,65
Galis Mini NG - 53 cm	535	62	62	2,00
Galis Mini NG - 100 cm	1015	62	62	2,60
Galis Mini NG - 125 cm	1250	62	62	3,10
Galis Mini NG - 149 cm	1495	62	62	3,60

COZAR

PRODUCT FAMILY



About the Product

COZAR is a linear weatherproof LED luminaire designed to provide reliable and cost-effective lighting in humid environments. With IP65 protection and IK09 impact resistance, it is durable against demanding conditions. It operates stably between -20°C and +40°C. DALI control, emergency kit options, and through/standard wiring alternatives enable easy installation and flexible use.

General Application Areas

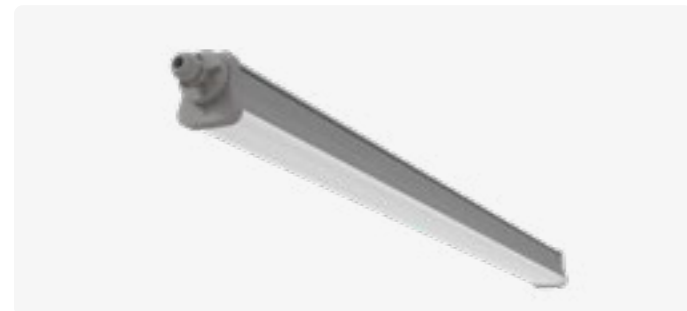
Industrial Facilities,
Aviation and Airports,
Mixed-Use Buildings,
Logistics,
Metro and Rail Systems,
Sports Halls



COZAR IP65 PLUS

19 W ~ 75 W
2079 lm ~ 8347 lm

Opal Diffuser



COZAR IP65 PLUS BPL

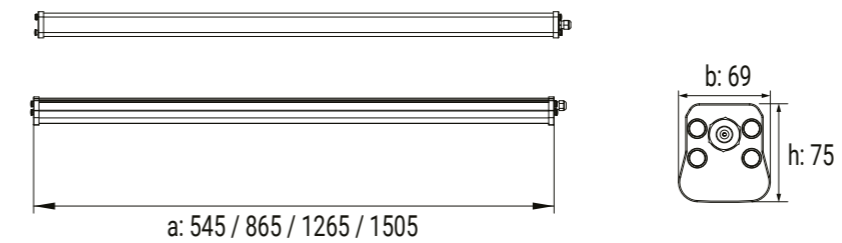
19 W ~ 75 W
2079 lm ~ 8347 lm

Opal Diffuser

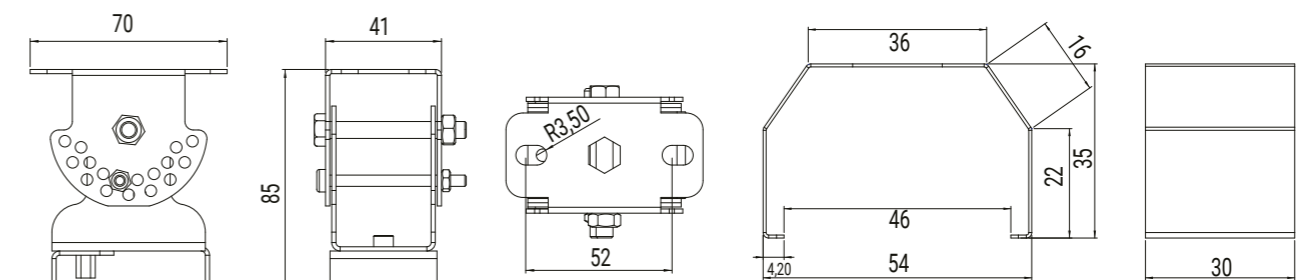
Technical Data



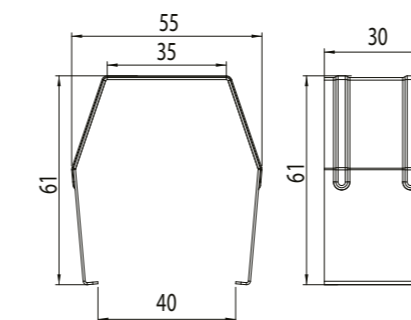
Technical Drawing



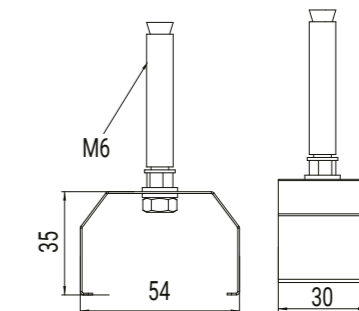
Angle Hanger Set



Long Suspension Spring Set (IP66)



Wall Hanger Set



Dimensions (mm)

	a	b	h	kg
Cozar - 50 cm	545	69	75	1,00
Cozar - 85 cm	865	69	75	1,50
Cozar - 125 cm	1265	69	75	1,90
Cozar - 149 cm	1505	69	75	2,20

TORNADO

PRODUCT FAMILY



About the Product

A highly protected linear lighting solution designed for long-lasting and reliable operation in demanding environments. With IP66 protection and IK08 impact resistance, it provides strong resistance against dust, moisture, and mechanical impact. It delivers stable performance within a temperature range of -20°C to +40°C. The emergency kit provides up to 3 hours of emergency lighting, while the DALI control option ensures energy efficiency and system integration.

General Application Areas

Industrial Facilities,
Aviation and Airports,
Mixed-Use Buildings,
Logistics,
Metro and Rail Systems,
Sports Halls

TORNADO

10 W ~ 68 W
1.500 lm ~ 9.400 lm

Opal Diffuser

TORNADO HE

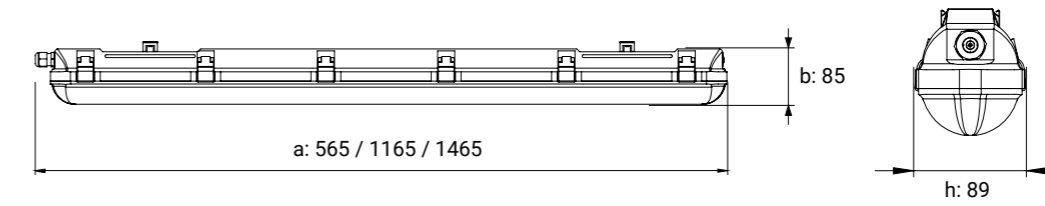
10 W ~ 68 W
1.610 lm ~ 10.700 lm

Opal Diffuser

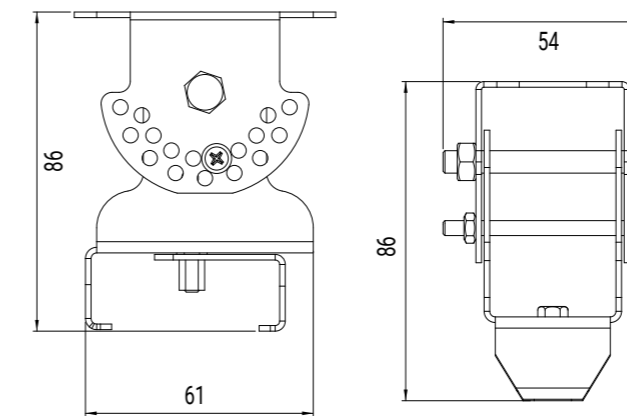
Technical Data



Technical Drawing



Angle Hanger Set



Dimensions (mm)

	a	b	h	kg
Tornado & HE - 60 CM	565	89	85	0,81
Tornado & HE - 120 CM	1165	89	85	1,60
Tornado & HE - 150 CM	1465	89	85	2,2

YPL

PRODUCT FAMILY

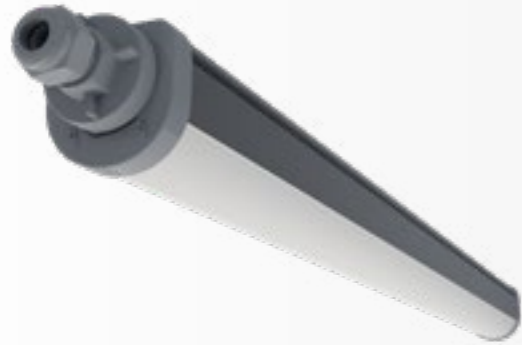


About the Product

The YPL Series provides reliable lighting for parking areas, logistics, and industrial facilities with IP66 protection and IK08 / IK09 impact resistance options. It operates stably between -20°C and +35°C, while the opal diffuser ensures visual comfort. Suitable for surface mounting, the series becomes an efficient and flexible solution with various power and driver alternatives and DALI control support.

General Application Areas

Iron and Steel & Heavy Industry,
Aviation,
Automotive Industry,
Logistics,
Glass and Ceramics,
Machinery and Electronics,
Chemicals and Plastics,
Wood and Paper,
Sports Halls



YPL NG

17 W ~ 53 W
1692 lm - 5870 lm

Opal Diffuser



YPL MEGA

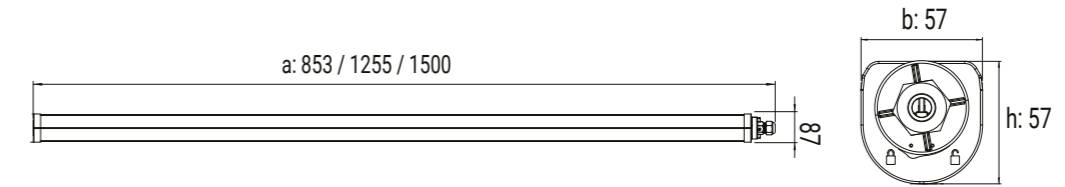
15 W ~ 64 W
2083 lm - 8892 lm

Opal Diffuser

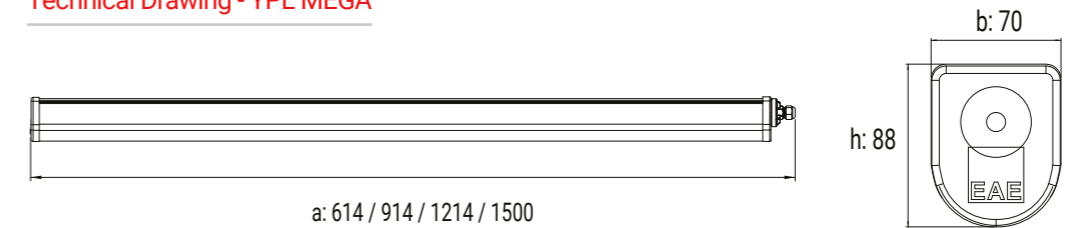
Technical Data



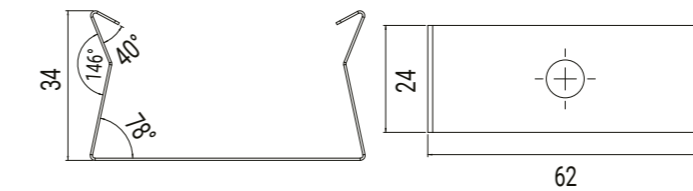
Technical Drawing - YPL NG



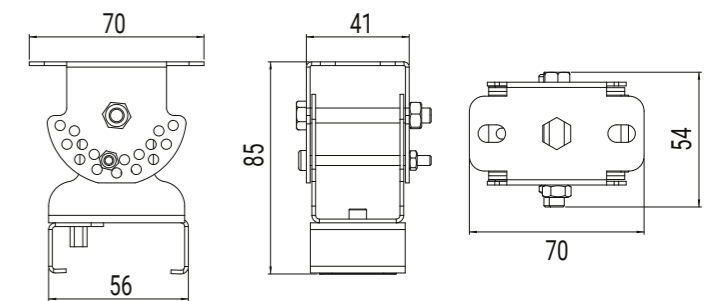
Technical Drawing - YPL MEGA



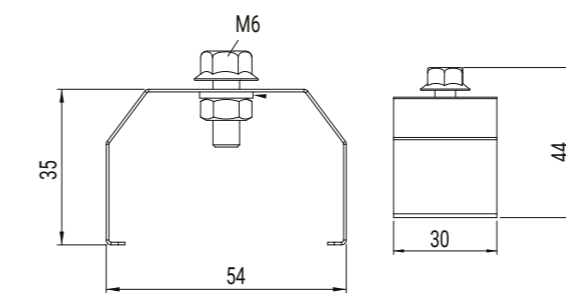
Technical Drawing - YPL NG Suspension Spring



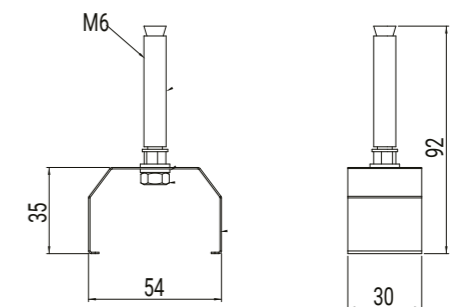
Technical Drawing - YPL NG Angle Hanger Set



Technical Drawing - YPL NG Tray Hanger Set



Technical Drawing - YPL NG Wall Hanger Set



Dimensions (mm)

	a	b	h	kg
YPL NG - 85 cm	853	57	57	0,9
YPL NG - 120 cm	1255	57	57	1
YPL NG - 149 cm	1500	57	57	1,3
YPL Mega	614 / 914 / 1214 / 1500	70	88	0,6

YPB NG



About the Product

With IP66 protection and IK08 impact resistance, it delivers high-efficiency lighting for various applications. It operates safely between -20°C and +45°C. The Batwing lens ensures visual comfort, while smart driver and sensor options provide flexible solutions. It offers easy installation and convenient maintenance.

General Application Areas

Logistics Facilities, Data Centers, Textile Manufacturing, Retail Facilities, Office Areas, Education and Science, Art Centers

24 W ~ 44 W
3407 lm - 6072 lm

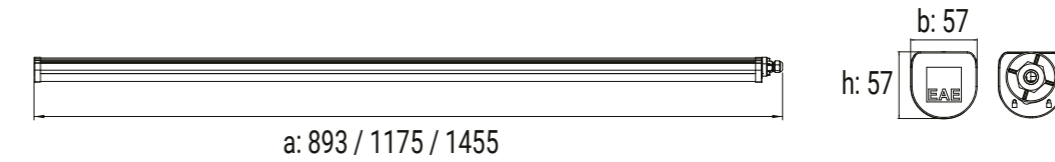
Batwing Lens



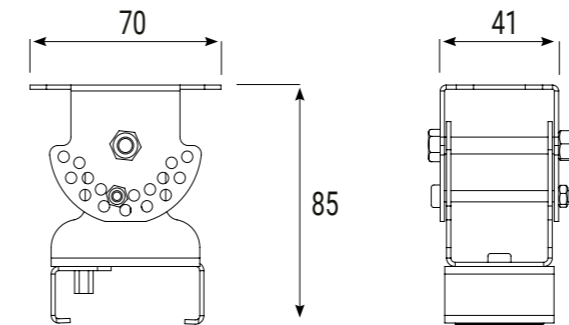
Technical Data



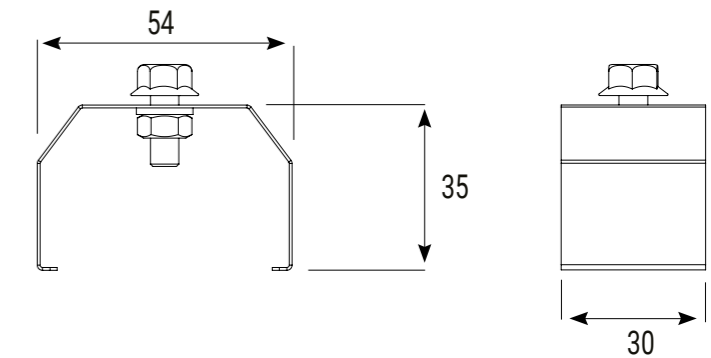
Technical Drawing



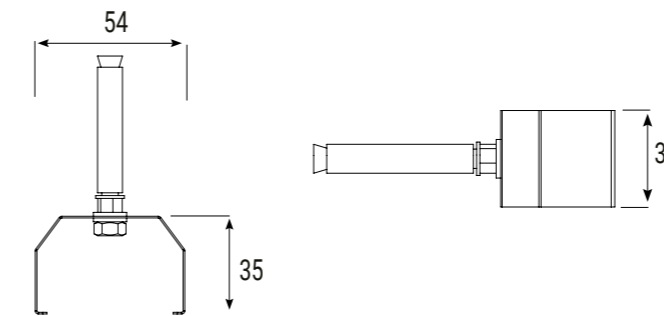
Angle Hanger Set



Fixed Hanger Set



Wall Hanger Set



Dimensions (mm)

	a	b	h	kg
YPB NG - 90 CM	893	57	57	1
YPB NG - 120 CM	1175	57	57	1,3
YPB NG - 150 CM	1455	57	57	1,6

TORIA

PRODUCT FAMILY



About the Product

A long-lasting linear LED lighting solution designed for demanding conditions with IP65 protection and IK09 impact resistance. Operating stably between -20°C and +40°C, the series reduces maintenance needs with its high-efficiency LED structure and durable housing. Various power and luminous flux options, surface mounting compatibility, and DALI control support provide flexible and sustainable lighting solutions for projects.

General Application Areas

- Shipyards, Ports,
- Shipbuilding Facilities,
- Aircraft Hangars,
- Cruise Ship Facades,
- Industrial Areas,
- Parking Areas,
- Outdoor Facilities

TORIA MINI

27 W ~ 61 W
4000 lm ~ 8500 lm

Opal Diffuser

TORIA MEGA

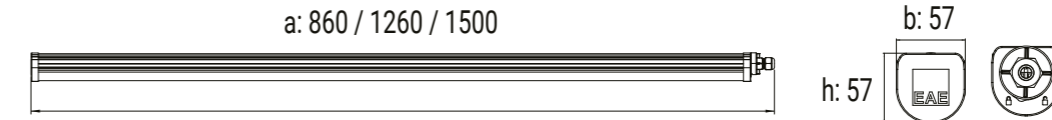
15 W ~ 70 W
2.190 lm ~ 9.230 lm

Opal Diffuser

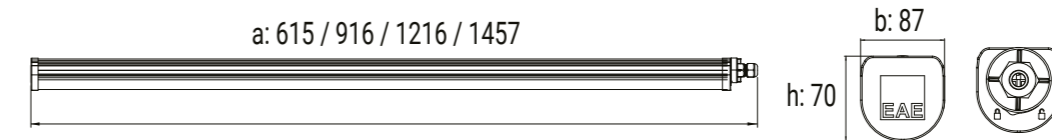
Technical Data



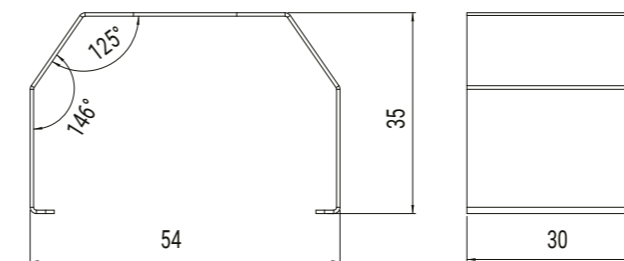
Technical Drawing - Toria Mini



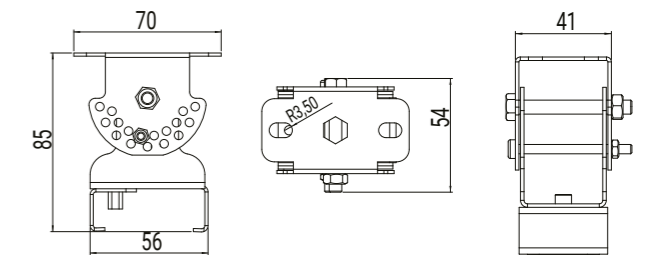
Technical Drawing - Toria Mega



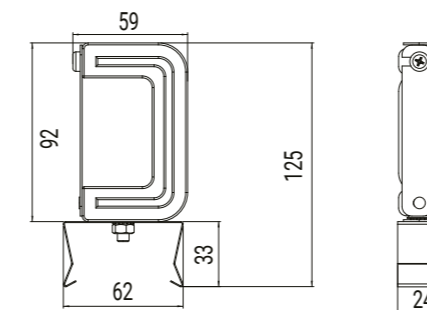
Technical Drawing - Toria Mini Suspension Spring



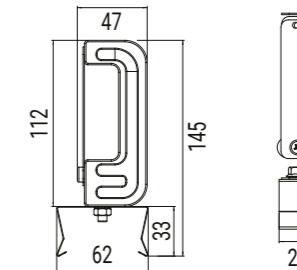
Technical Drawing - Toria Mini Angle Hanger Set



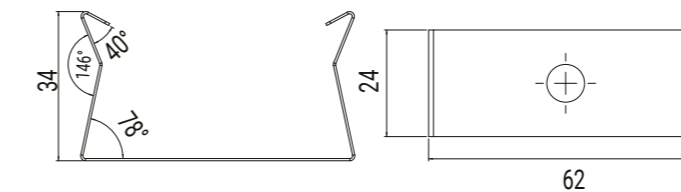
Technical Drawing - Toria Mega Busbar Hanger Set



Technical Drawing - Toria Mega KYS Busbar Hanger Set



Technical Drawing - Toria Mega Suspension Spring



Dimensions (mm)

	a	b	h	kg
Toria Mini - 85 cm	860	57	57	1
Toria Mini - 125 cm	1260	57	57	1,3
Toria Mini - 149 cm	1500	57	57	1,65
Toria Mega - 60 CM	615	87	70	1,05
Toria Mega - 90 CM	916	87	70	1,13
Toria Mega - 120 CM	1216	87	70	1,56
Toria Mega - 149 CM	1457	87	70	1,99



Outdoor Lighting

RA

PRODUCT FAMILY



About the Product

Designed to deliver long-lasting and powerful illumination in demanding outdoor conditions, this LED street luminaire offers high reliability with IP66 protection and IK08 / IK09 impact resistance. It operates stably between -40°C and +60°C. With different insulation classes and smart control infrastructures, it adapts to modern road lighting projects.

General Application Areas

Urban and Residential Streets,
Bridges,
Bicycle and Pedestrian Paths,
Squares,
Parking Areas,
Perimeter Lighting,
Roads and Highways



RA

25 W ~ 58 W
3.558 lm ~ 7.962 lm

100° / 110° / Wide Angle /
Extra Wide Angle

RF Wireless & DALI / 1-10V
Dimko / Nema / Zhaga



RA 2

30 W ~ 116 W
3.637 lm ~ 16.906 lm

100° / 110° / Wide Angle /
Extra Wide Angle

RF Wireless and DALI / 1-10V
Dimko / Nema / Zhaga



RA 3

103 W ~ 218 W
15.300 lm ~ 27.700 lm

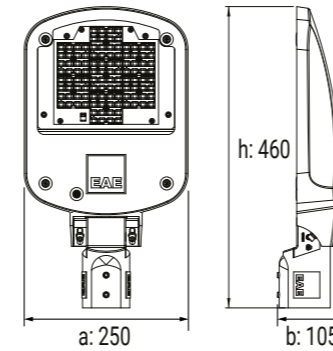
100° / 110° / Wide Angle /
Extra Wide Angle

RF Wireless and DALI / 1-10V
Dimko / Nema / Zhaga

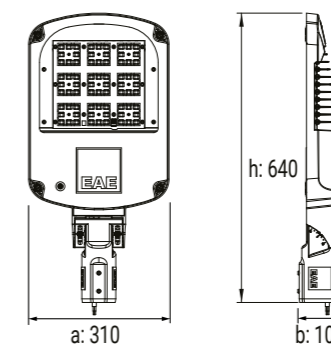
Technical Data



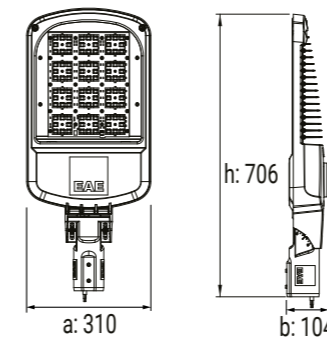
Technical Drawing - RA



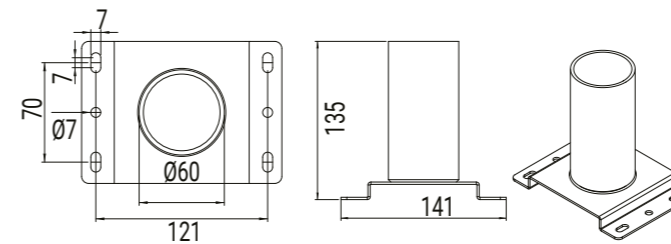
Technical Drawing - RA2



Technical Drawing - RA3



Wall Hanger Set

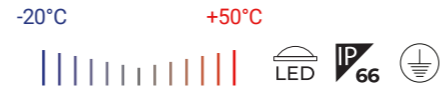


Dimensions (mm)

	a	b	h	kg
RA	250	105	460	3,4
RA 2	310	104	640	6,7
RA 3	310	104	705	8,3

CINTIA

PRODUCT FAMILY



About the Product

With its durable die-cast aluminum housing and tempered transparent glass, it delivers long-lasting and reliable illumination. IP66 protection and IK09 impact resistance provide high durability against harsh environmental conditions. With a wide range of power options and high luminous efficiency, it ensures stable and efficient performance in environments between -20°C and +50°C.

General Application Areas

Urban and Residential Streets,
Bridges,
Bicycle and Pedestrian Paths,
Squares,
Parking Areas,
Perimeter Lighting,
Roads and Highways



CINTIA 1 (CN1)

40 W ~ 60 W
6.200 lm ~ 8.500 lm

100° & Tempered Transparent Glass



CINTIA 2 (CN2)

76 W ~ 98 W
11.800 lm ~ 14.700 lm

100° & Tempered Transparent Glass



CINTIA 3 (CN3)

132 W ~ 176 W
21.100 lm ~ 27.200 lm

100° & Tempered Transparent Glass



CINTIA 4 (CN4)

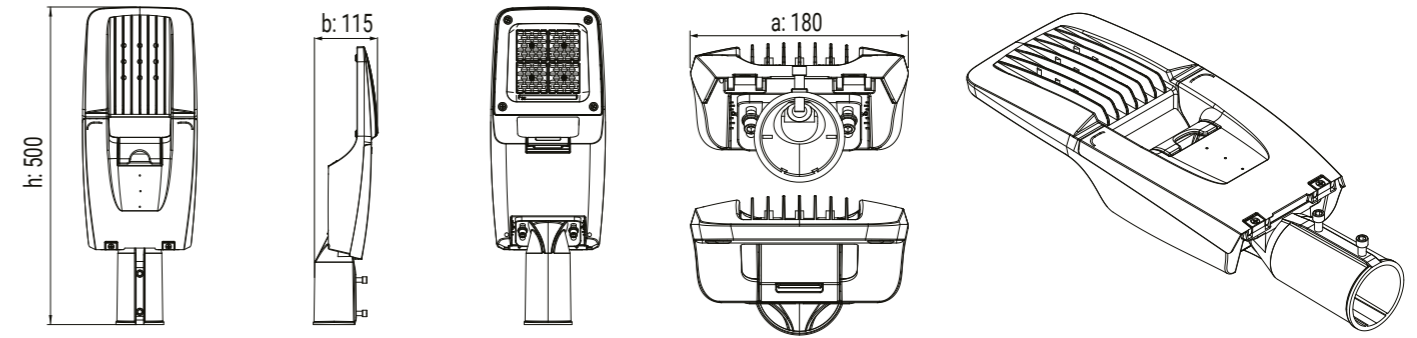
200 W ~ 250 W
30.300 lm ~ 39.400 lm

100° & Tempered Transparent Glass

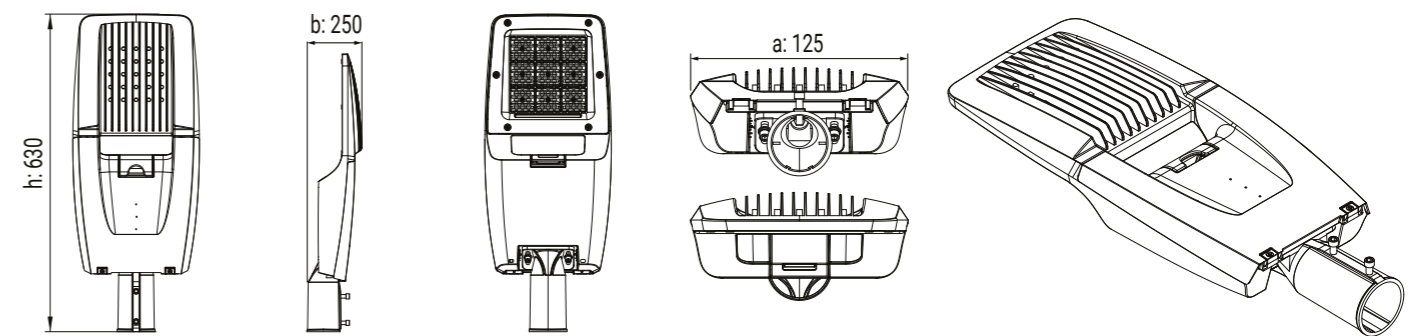
Technical Data



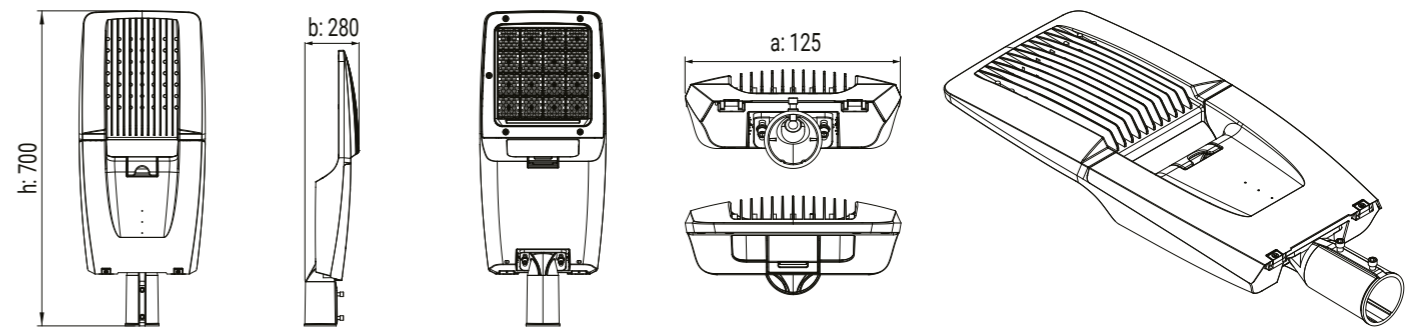
Technical Drawing - CN1



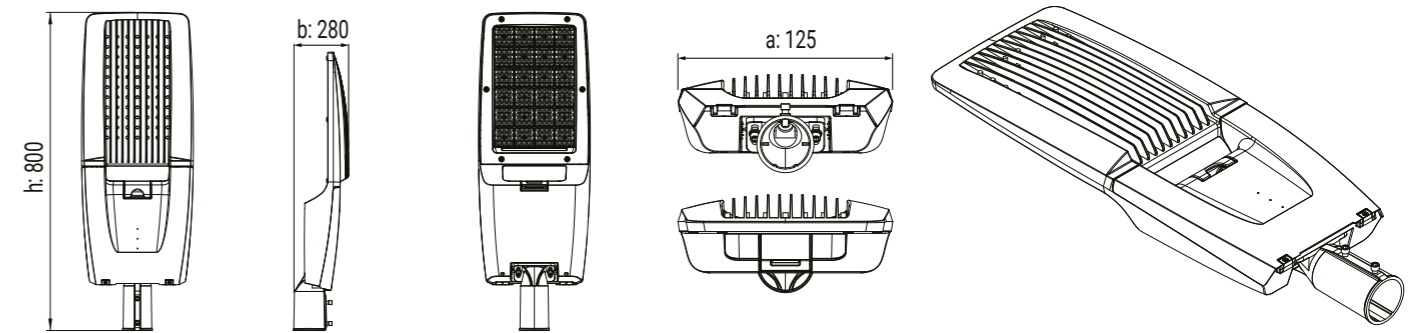
Technical Drawing - CN2



Technical Drawing - CN3



Technical Drawing - CN4



Dimensions (mm)

	a	b	h	kg
CN1	180	115	500	2,2
CN2	125	250	630	4,2
CN3	125	280	700	-
CN4	125	280	800	-

ALBA



About the Product

ALBA is a cost-effective LED luminaire designed for street lighting with its glass-free structure. With IP66 protection and IK05 impact resistance, it is suitable for outdoor conditions. Offering 5000–14200 lm luminous flux, a 100° beam angle, and pole mounting compatibility, it provides uniform illumination. It can be integrated into smart systems with DALI and 1–10 V control options.

General Application Areas

Streets and Surroundings, Ports, Highways, Shipyards, Outdoor Areas, Urban Areas

50 W ~ 92 W
5000 lm - 14200 lm

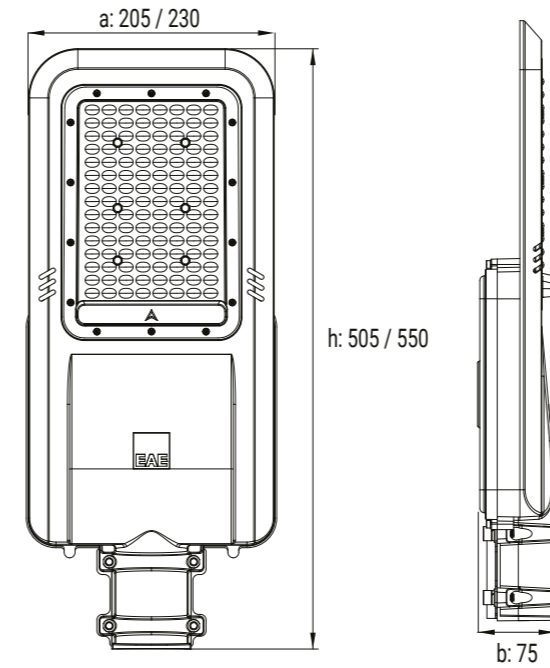
100°



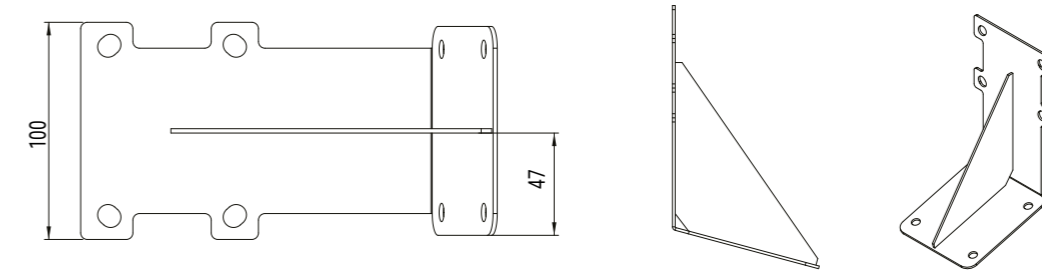
Technical Data



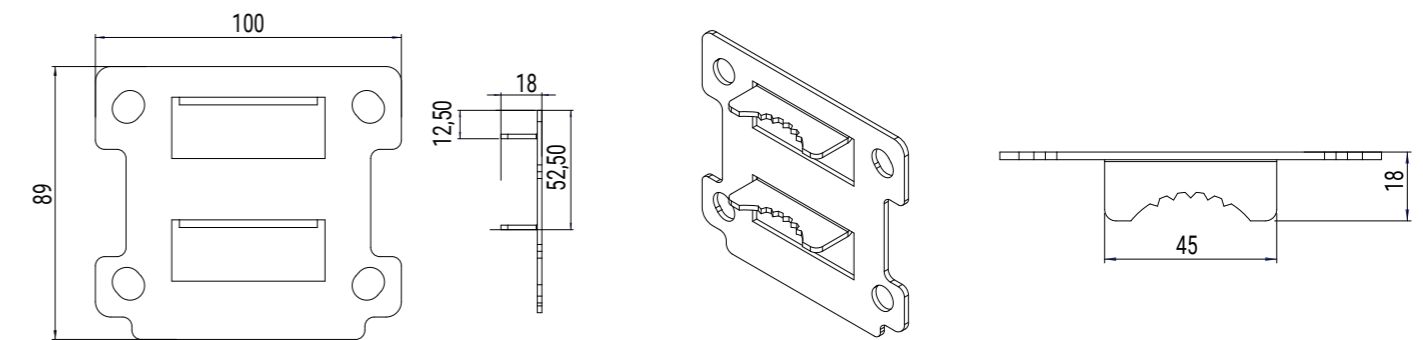
Technical Drawing



15° Wall Hanger Set



Pipe Hanger Set



Dimensions (mm)

	a	b	h	kg
Alba	205 / 230	75	505 / 550	1,47

ARKTOS MINI



About the Product

A compact and durable LED luminaire developed for street and area lighting applications. With a power range of 56 W – 120 W and a luminous output of 7,700 lm – 15,500 lm, it delivers reliable performance. Its die-cast aluminum housing, IP66 protection, and IK09 impact resistance ensure long-lasting use in harsh outdoor conditions. The 100° beam angle provides uniform light distribution across wide areas.

General Application Areas

Streets and Surroundings,
Ports, Highways,
Shipyards,
Outdoor Areas,
Urban Areas

56 W ~ 120 W
7.700 lm - 15.500 lm

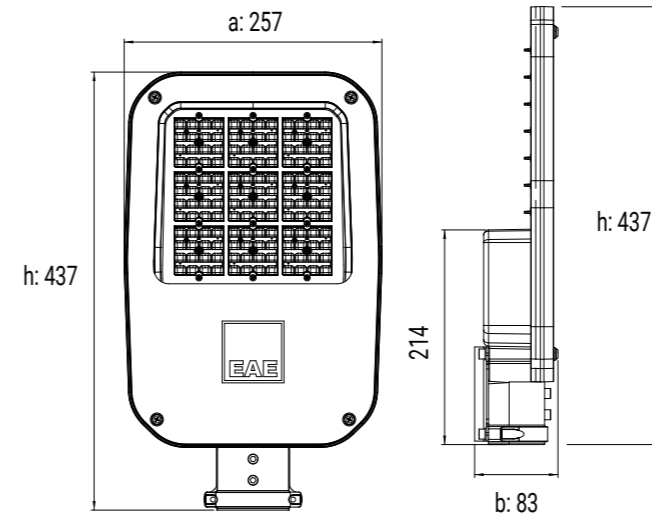
100°



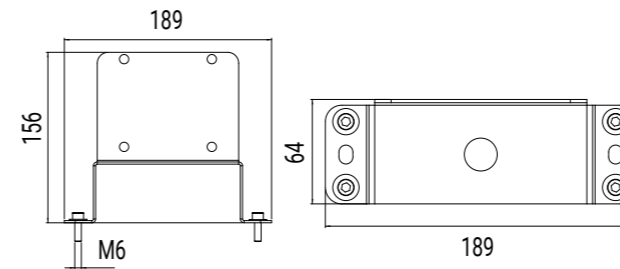
Technical Data



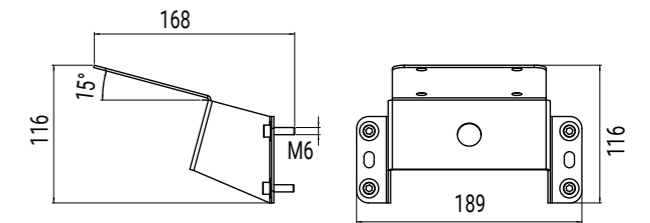
Technical Drawing



Wall Hanger Set



15° Wall Hanger Set



Dimensions (mm)

	a	b	h	kg
Arktos Mini	257	83	437	3,24

KANOLED IP65



About the Product

A reliable and durable LED luminaire designed for fuel station applications. With IP65 protection and IK07 impact resistance, it offers high durability against demanding conditions. It operates stably between -30°C and +50°C. As a one-to-one replacement for 250W HIT luminaires, it provides high efficiency and long-lasting illumination.

General Application Areas

Oil Refineries,
Tanker Loading and Unloading Areas

60 W ~ 100 W
9700 lm ~ 14415 lm

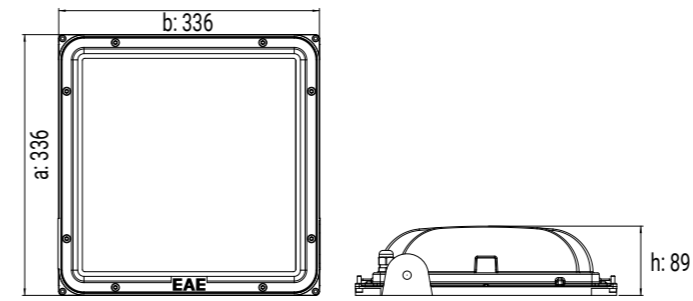
115° Lens
(Tempered Transparent Glass / Tempered Frosted Glass)



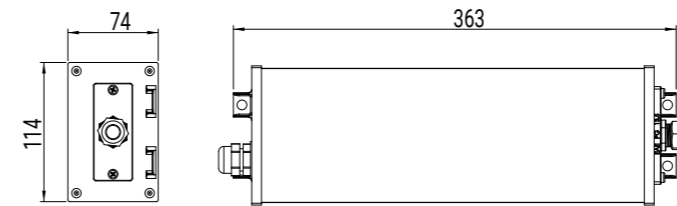
Technical Data



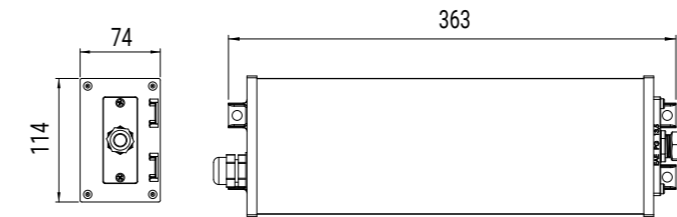
Technical Drawing



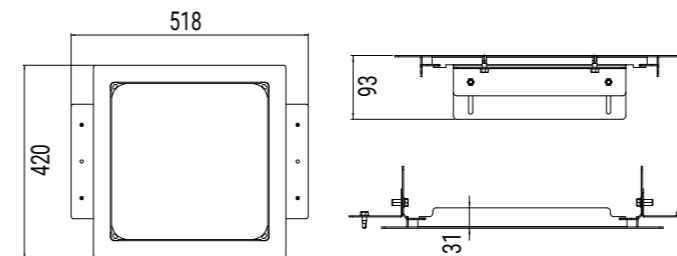
External EMG Kit Box (Standard)



External EMG Kit Box (DALI)



Metal Hanger Set



Dimensions (mm)

	a	b	h	kg
Standart IP65	336	336	89	6



Emergency Lighting

SAVIOR MATE



About the Product

Provides a reliable emergency lighting solution for power outages or situations with limited access to electricity. Thanks to its integrated power source, it activates automatically during a blackout and delivers up to 3 hours of uninterrupted illumination. With IK09 impact resistance, it can be safely used in demanding conditions. In battery mode, it operates at 5W, ensuring energy efficiency and extended operation time. A practical on/off button enables quick and easy use.

General Application Areas

Tunnels,
Long Corridors,
Other Demanding Work Environments

4 W
1620 lm

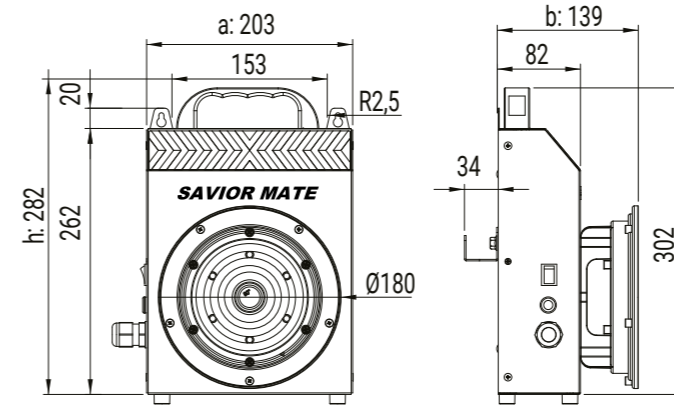
PC Lens



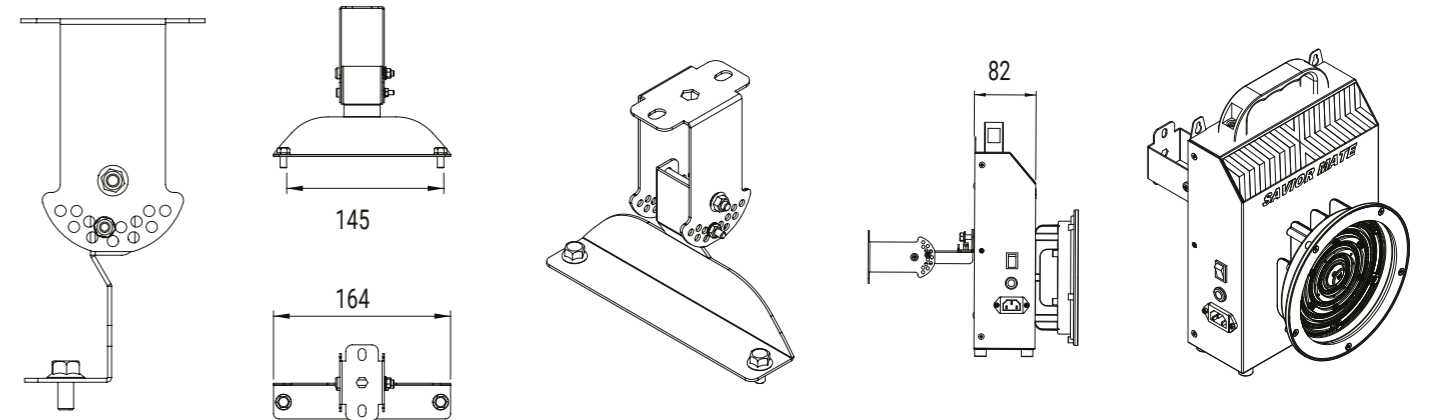
Technical Data



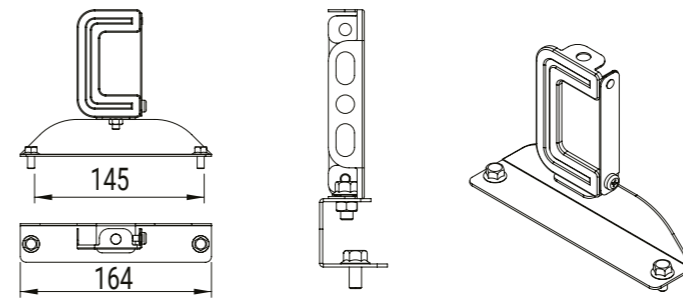
Technical Drawing



Angled Wall - Ceiling Hanger Set



Busbar Hanger Set



Dimensions (mm)

	a	b	h	kg
Savior Mate	203	139	282	2,75

GALIS KIT (EMERGENCY)



About the Product

The GLE Kit is an emergency lighting solution compliant with European regulations, featuring an external battery structure that activates only during power outages. With IP65 protection and IK09 impact resistance, it ensures reliable performance. It operates stably between +5°C and +45°C and is ideal for industrial areas with its practical surface-mounted installation.

General Application Areas

Logistics Facilities,
Education and Science Buildings,
Mixed-Use Buildings,
Stores and Markets,
Office and Administrative Buildings

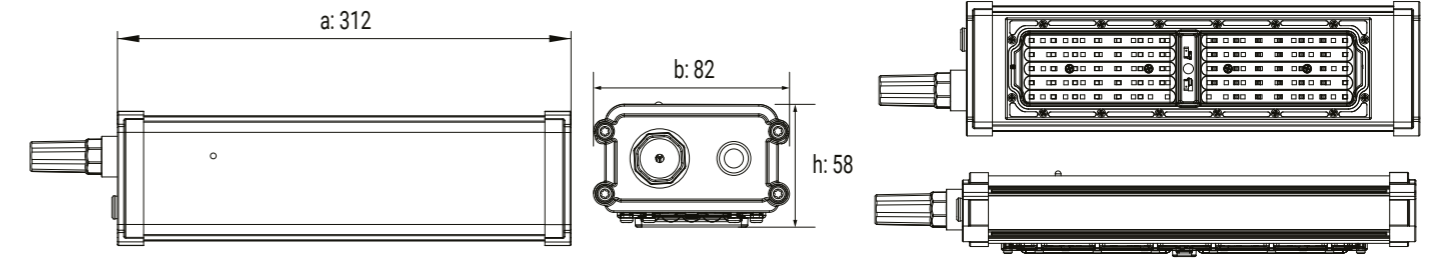
10 W
1600 lm
90° Lens



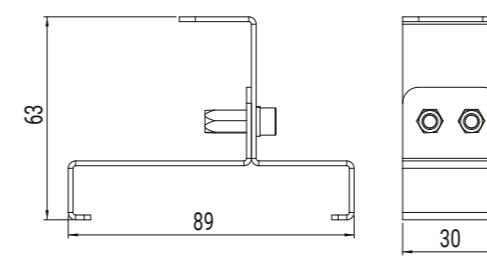
Technical Data



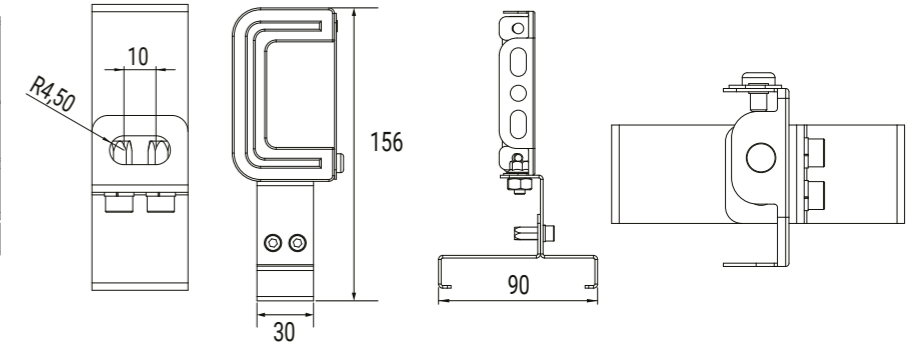
Technical Drawing



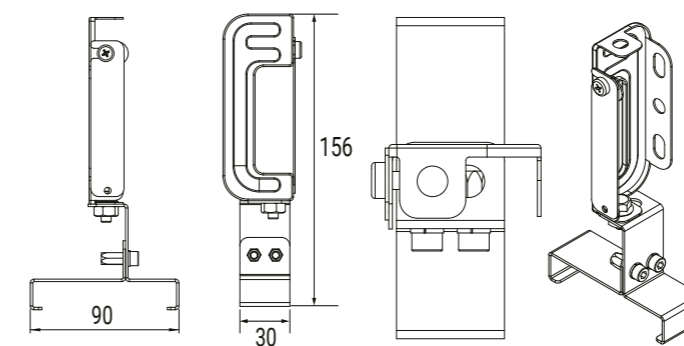
Fixed Hanger Set



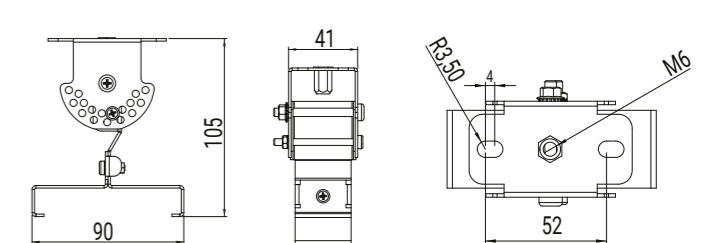
Busbar Hanger Set



KYS Busbar Hanger Set



Angle Hanger Set



Dimensions (mm)

	a	b	h	kg
Galis Kit (Emergency)	312	82	58	1,4

YPL NG KIT (EMERGENCY)



About the Product

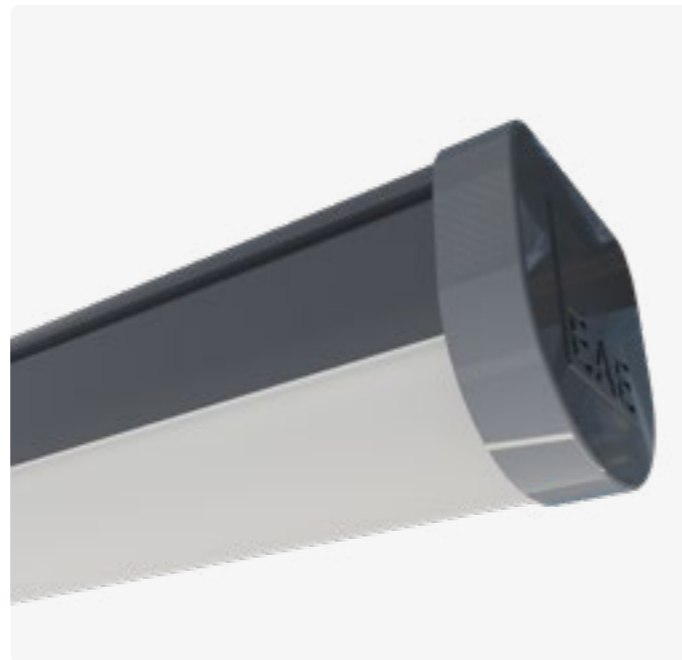
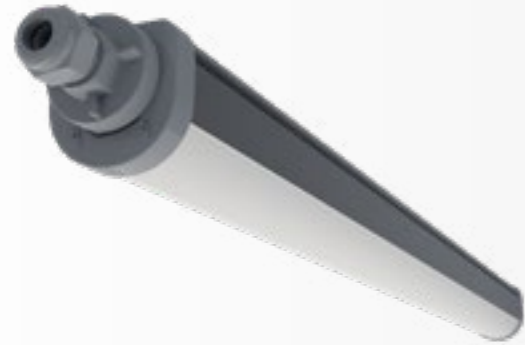
An emergency luminaire that activates during power outages to provide safe guidance and illumination. Its compact design and surface-mounted structure allow easy adaptation to various indoor applications. With IP66 protection and IK09 impact resistance, it ensures reliable performance in demanding conditions. Its high-efficiency LED structure delivers effective emergency lighting with low energy consumption.

General Application Areas

Iron and Steel & Heavy Industry, Aviation, Automotive Industry, Logistics, Glass and Ceramics, Machinery and Electronics, Chemicals and Plastics, Wood and Paper, Sports Halls

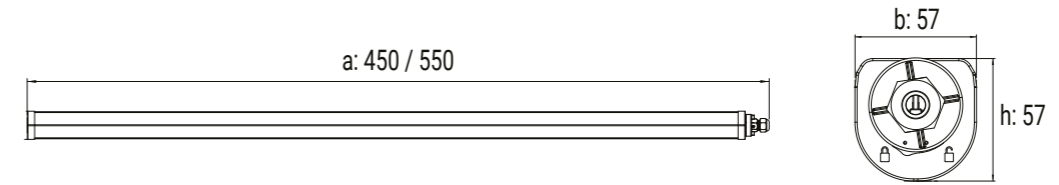
2 W - 5 W
210 lm - 574 lm

Opal Diffuser

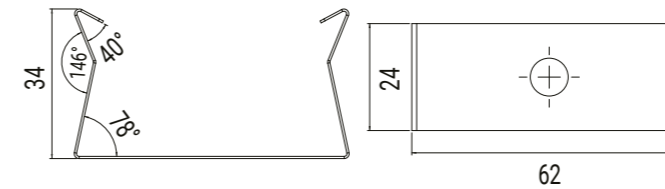


Technical Data

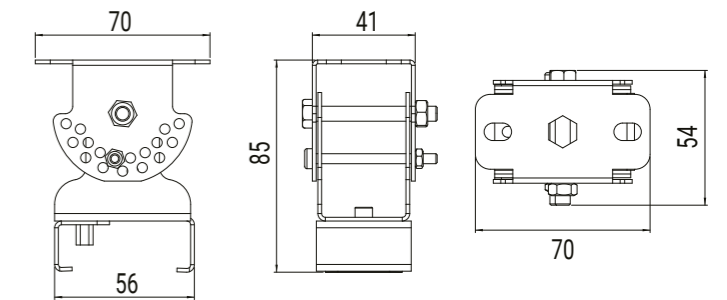
Technical Drawing - YPL NG KIT (Emergency)



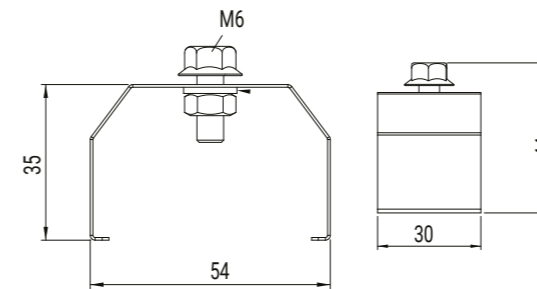
Suspension Spring



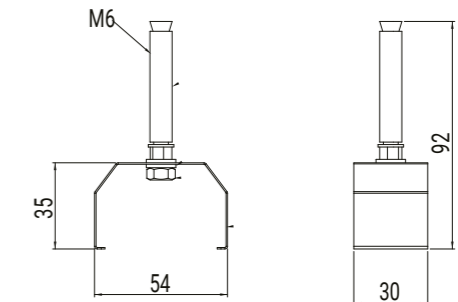
Angle Hanger Set



Tray Hanger Set



Wall Hanger Set



Dimensions (mm)

	a	b	h	kg
YPL NG KIT (Kesintide Yanan)	450 / 550	57	57	0,5



GARLED MEGA KIT (EMERGENCY)



About the Product

An emergency luminaire designed to provide safe illumination during power outages. Its aluminum extrusion body and PC lens structure, combined with IP65 protection and IK09 impact resistance, make it suitable for demanding conditions. With a 90° beam angle and ≥80 CRI, it delivers uniform light distribution. Available with On-Off and DALI options, it automatically activates during power failures thanks to its integrated ACK unit.

General Application Areas

Parking Areas,
Warehouses,
Wet and Humid Environments

10 W
1600 lm
90°

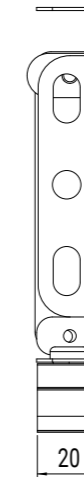
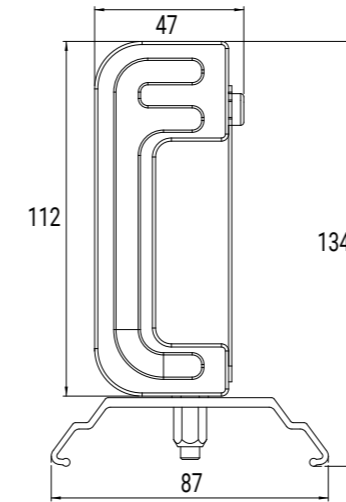


Technical Data

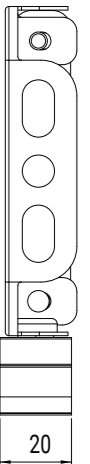
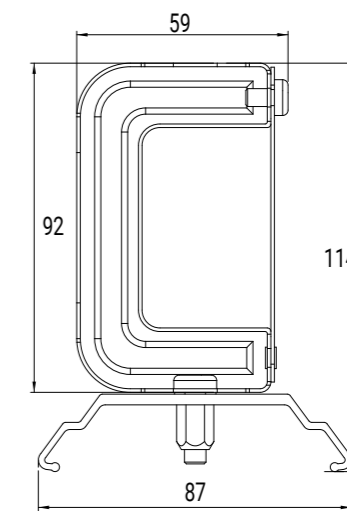
Technical Drawing - Garled Mega KIT (Emergency)



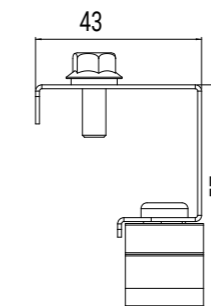
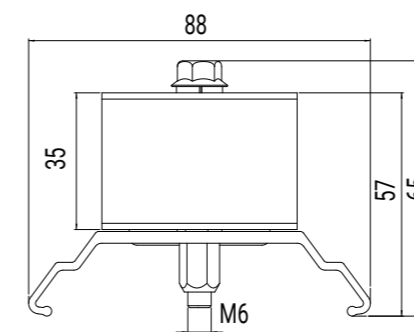
KYS Busbar Hanger Set



Busbar Hanger Set



1x Tray Hanger Set



Dimensions (mm)

	a	b	h	kg
Garled Mega KIT (Emergency)	357	105	70	1



DIMKO
Lighting Automation

DIMKO

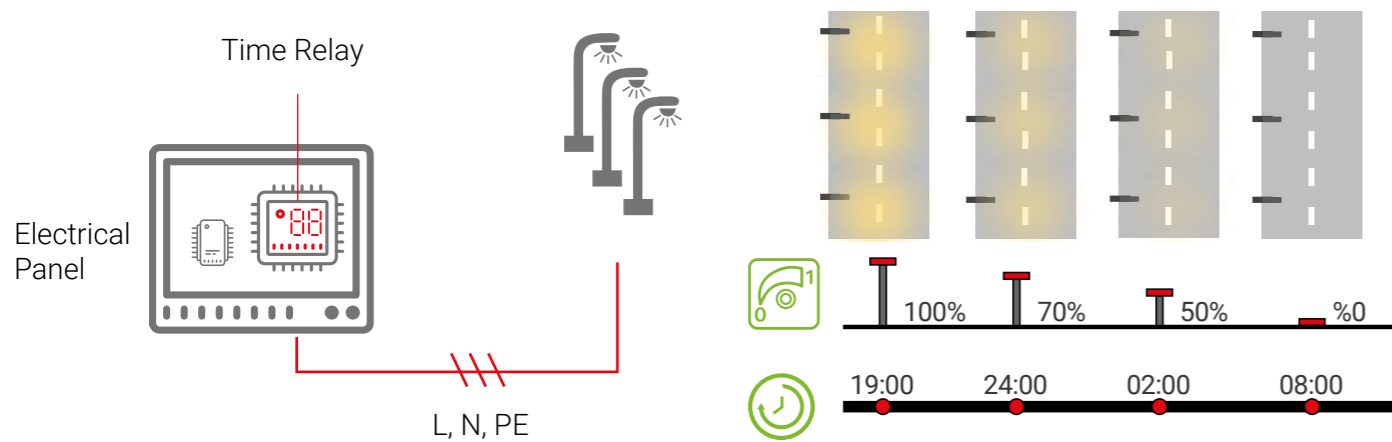
Meet Sustainable Energy Saving!



Dimko is used as a signal generator in light control devices, dimmer/increase control of time relays. The module is an EAE Lighting control solution that allows the user to adjust the time and lighting level.

DIMKO SCENARIO

System opening and closing hours can be set with 7 different scenarios according to summer and winter months.



Products Compatible with DIMKO



RA RA 2 RA 3 ARKTOS NG V.2

DIMKO

Quick, easy and affordable...



%81
Energy savings up to **81%**.

Dimming system that does not harm the ecosystem.



No maintenance costs.

%55 ABOVE
Savings of more than **55%** on lighting expenses.

Advantageous installation
Installation without expensive duct excavations.

Efficient time management.
It can be programmed within 40 seconds.

Possibility of use with existing infrastructure
No need to replace existing luminaires and poles.

Simple control
Provides control without the need for a team of experts.

Products Compatible with DIMKO



PROLIT PROLIT PLUS PROLIT KOMPAKT



Scan the
QR code for
all our catalogs.

EAE Lighting
İkitelli OSB Mah. Eski Turgut Özal Cad.
EAE No: 20, İç Kapı No: Giriş Kat
Başakşehir / İSTANBUL - TÜRKİYE

Tel : +90 212 413 21 00 (pbx)
Faks : +90 212 549 37 90

www.eaelighting.com

EAE LIGHTING Industrial Products Catalogue (English) - Updated: 24.02.2026

EAE Lighting reserves the right to make changes deemed necessary without prior notice.
Please contact us for more information about the products and details in the catalog.

